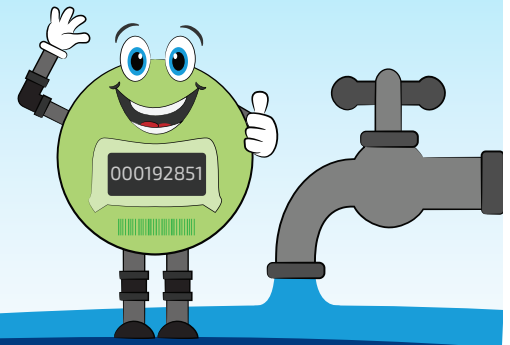


# WATER METERS

Water is a precious resource and water meters will help locate where we have leaks so together with customers we have better oversight of how we can manage and conserve water. Evidence shows that installing water meters can save 30 per cent on water use.



## What you need to know about your new water meters.

The water meter installation project will be completed in two stages: Whitianga as Stage 1 and Whangamatā will follow as Stage 2. The meter installations for Whitianga will be completed using the Tranche One grant funding which has already been approved by the Government, as part of the water reforms that are underway. Our Council has received 50 per cent of these funds (\$2.4 million) already.

### For Whitianga (Stage 1):

On-site work is planned to start in April/May 2021 with enabling works, which involves the identification of water pipelines to properties and making any necessary changes to those pipelines so that the meters can be easily installed later.

Following the enabling works, meter installations are expected to start later this year and be completed by 31 March 2022.

Tenders for the supply and installation of water meters are scheduled for May/June 2021.

**For Whangamatā (Stage 2)**, a date has not been confirmed for the commencement of work and further information will be provided closer to the time, but it's anticipated stage 2 will commence during the first half of 2022.

There will be letter drops and media releases to notify affected residents, prior to work starting on or outside their property. This applies to both enabling works as well as meter installations.

## Why Whangamatā and Whitianga?

Thames South, Thames, Coromandel Town, Pauanui and some areas of Tairua have water meters.

We're now installing meters at Whangamatā and Whitianga, as these areas attract a large holiday population, and the number of permanent residents is continuing to grow. Our supplies are facing increased demand, generally, at the time of the year when rain can be scarce which puts them under further strain. We want to be able to ensure we can meet our communities' water health requirements all year round.

## Why water meters?

Water meters will help you better understand your usage and will also encourage water conservation. Everyone using a little less water each day will help our District while using the available water as efficiently as possible. Water meters will also help us to track water loss within the system and locate and fix water loss in the system more effectively.

Our Water Demand Strategy sets out demand management initiatives to help conserve water, educate communities about water use and optimise demand which you can read at [tcdc.govt.nz/wds](http://tcdc.govt.nz/wds).

## What are the benefits of installing water meters?

**Backflow prevention:** As part of installing water meters new manifolds (the part that allows water meters to connect to water connections) will be installed which include backflow prevention devices. Backflow prevention devices are one-way valves which prevent potential contaminants entering the water supply system.

**Leak detection:** water meters are a useful tool for discovering large leaks on private property. Detecting these leaks will help private property owners repair them and reduce the demand on the water supply.

Overall reduction in water usage as people become aware of what they use and the effect that their usage has.

## How much will my water cost with a meter?

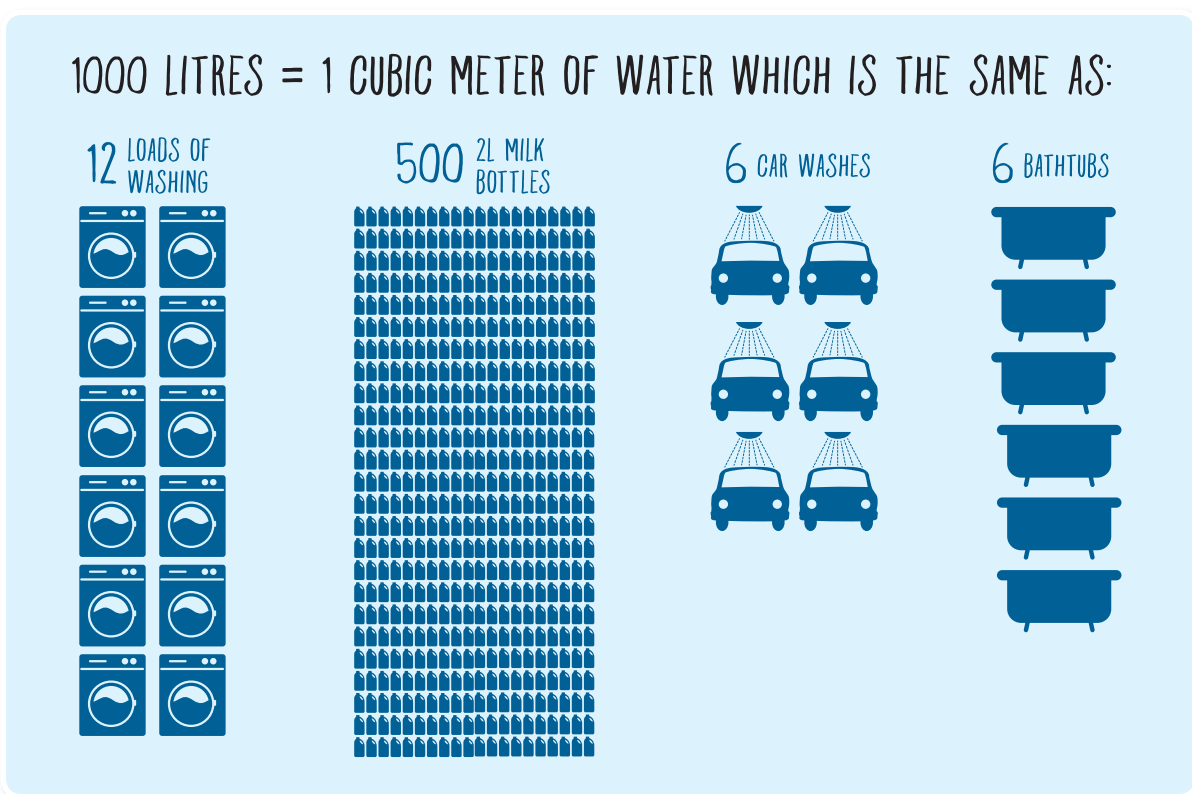
There is no cost to ratepayers to install. The money for the project was received from Central Government funding.

We won't be charging fees for water used until we better understand where our leaks are. Any introduction of charges will be publicly consulted on through an Annual Plan or a future Long Term Plan.

In towns currently on water meters, the cost to treat, distribute and manage water supply is broken down as a fixed targeted rate and a fee per cubic meter (usage rate). The fee contributes to cover the treatment, distribution, and management of water supply to ensure water is clean and free from harmful organisms.

To give you an idea of what your water bill could look like in the future, below are the 2019/20 costs for supplies currently on water meters:

Metered Area	Fixed targeted rate 2019/2020	Usage rate per cubic meter	Average meter usage 2019/2020	Total
Thames	280.82	\$1.37	308.21	589.03
Pauanui	280.82	\$1.37	167.75	448.57
Non metered	561.65			561.65



### Does Council make a profit from water meters?

No. It is illegal for councils to profit from providing water. Money received from water bills covers the treatment, distribution and management of water supply to ensure that when water reaches residents it is free from harmful organisms and meets water supply standards.

 More information can be found at [tcdc.govt.nz/watermeters](http://tcdc.govt.nz/watermeters)

 Stay up to date with Council news and any changes to services:  
Website: [tcdc.govt.nz](http://tcdc.govt.nz)

 Get in touch with us by  
phone: 07 868 0200 or  
email [customer.services@tcdc.govt.nz](mailto:customer.services@tcdc.govt.nz)

Facebook: [facebook.com/ThamesCoromandelDistrictCouncil](https://facebook.com/ThamesCoromandelDistrictCouncil)  
Subscribe to our eNewsletters to get news and updates direct to your inbox: [tcdc.govt.nz/subscribe](http://tcdc.govt.nz/subscribe)

We have ads in local newspapers across the Coromandel and regular spots on local radio stations – so stay in touch.