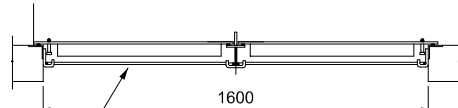
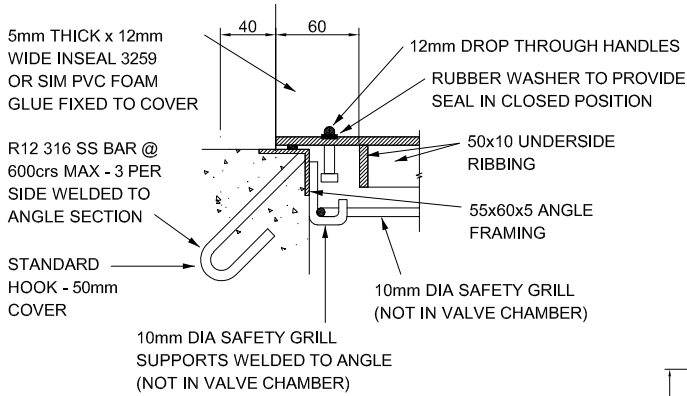


**SECTION 1**

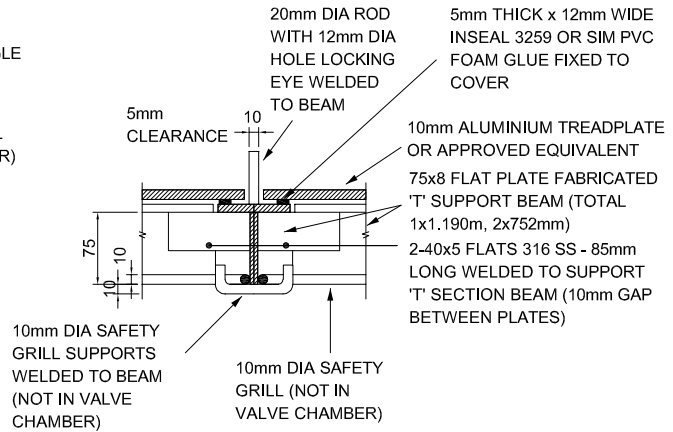


SAFETY GRILL. 10mm DIA BARS @ 200 CRS MAX. BOTH WAYS

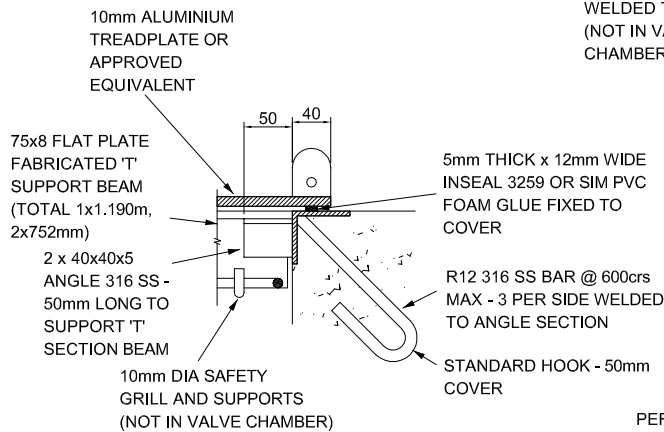
**SECTION 2**



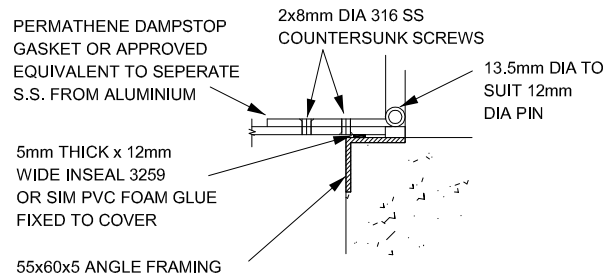
**SECTION 3**



**SECTION 4**



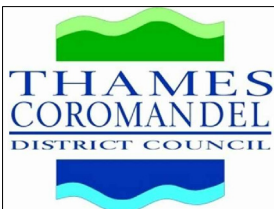
**SECTION 5**



**SECTION 6**

**NOTES:-**

1. STAINLESS STEEL WELDING IS TO BE IN ACCORDANCE WITH AS/NZS 1554.6 1994
2. ALL S.S. WELDS TO BE A MINIMUM OF CATEGORY 2B CLASSIFICATION WITH GRADE II SURFACE FINISH DESIGNATION
3. MATERIALS
  - TREADPLATE; 5052 ALUMINIUM
  - FLAT BAR RIBBING; 6063 ALUMINIUM
  - ALL OTHER ITEMS; 316 STAINLESS STEEL
4. ALSO REFER TO SHEET 5000-12



STANDARD DETAIL:

**MINOR WASTEWATER  
PUMPING STATIONS  
CODE FOR CONSTRUCTION  
-LID DETAIL**

DATE: June 2010  
NOT TO SCALE

TCDC NO:

SHEET NO:

REV:

**5000**

**14**