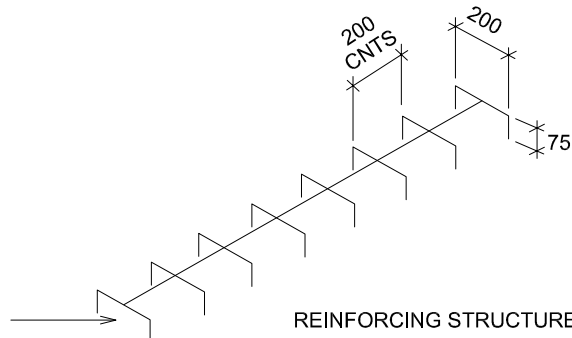


D10 R10 BAR FORMED TO CREATE STRENGTHENING SADDLES 200x75 @ 200 CENTRES ALSO CENTRALLY LOCATED TIE BAR



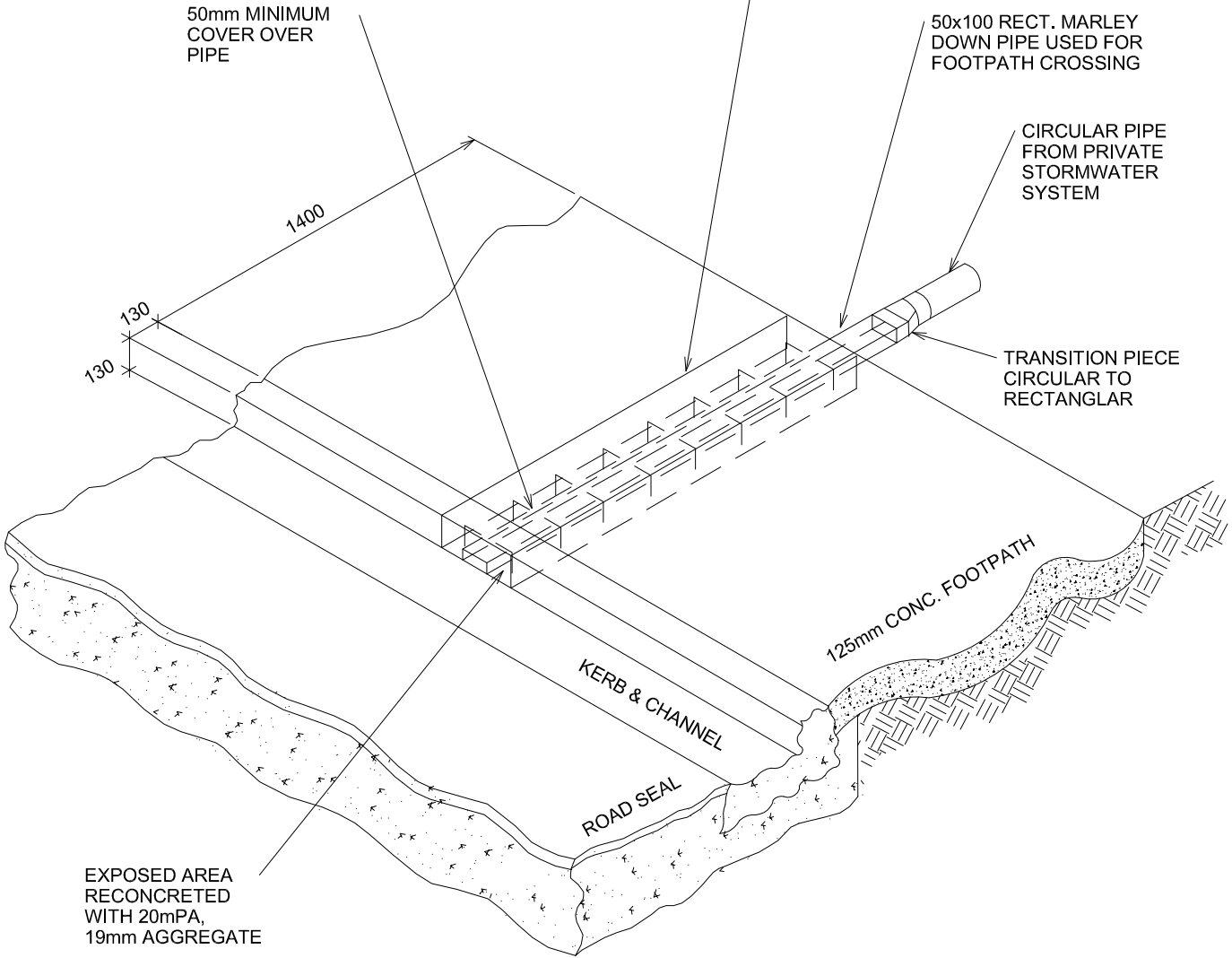
SAW CUT FOOTPATH & KERB @ 300mm WIDTH x 130mm DEEP. EXCAVATE, LAY PIPE & REINFORCING BARS. RECONCRETE FILL TO APPROVED FINISH

50mm MINIMUM COVER OVER PIPE

50x100 RECT. MARLEY DOWN PIPE USED FOR FOOTPATH CROSSING

CIRCULAR PIPE FROM PRIVATE STORMWATER SYSTEM

TRANSITION PIECE CIRCULAR TO RECTANGULAR



EXPOSED AREA RECONCRETE WITH 20mPA, 19mm AGGREGATE



STANDARD DETAIL:
STORMWATER CROSSING FOR FOOTPATHS

DATE: June 2010
 NOT TO SCALE

TCDC NO: SHEET NO: REV:

6000 13