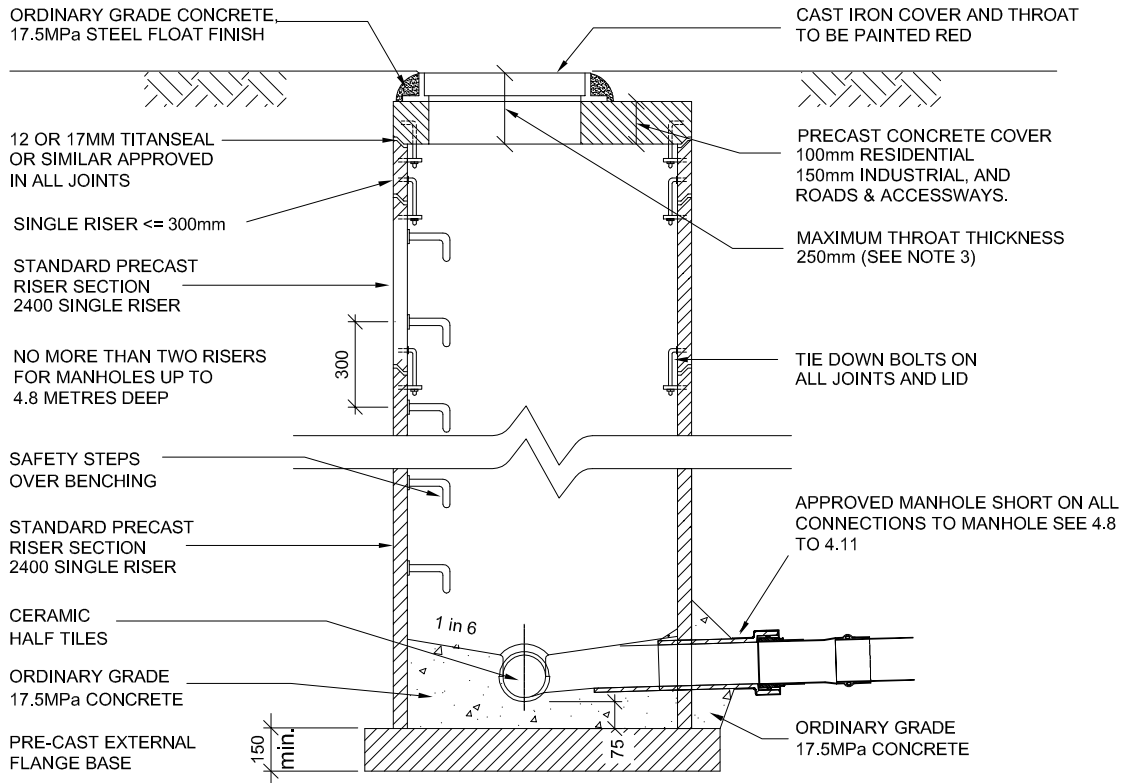


CAST IRON FRAME & COVER



NOTES:

1. For Manholes with internal drop connection increase manhole diameter to 1200.
2. For manholes with more than two internal drops increase diameter to minimum 1350 diameter.
3. May increase to 350mm with heavy duty lids where fixed surface levels are to be matched.
4. The manhole throat is to be made from insitu 17.5 MPa concrete. The use of pre-cast rings is prohibited.



STANDARD DETAIL:

WASTEWATER MANHOLE

DATE: June 2010
NOT TO SCALE

TCDC NO: SHEET NO: REV:

5000 1