



# Online Town Hall Meeting

with Mayor Peter Revell and Chief Executive Aileen Lawrie

LOWER RATES

HIGHER RATES



# Agenda

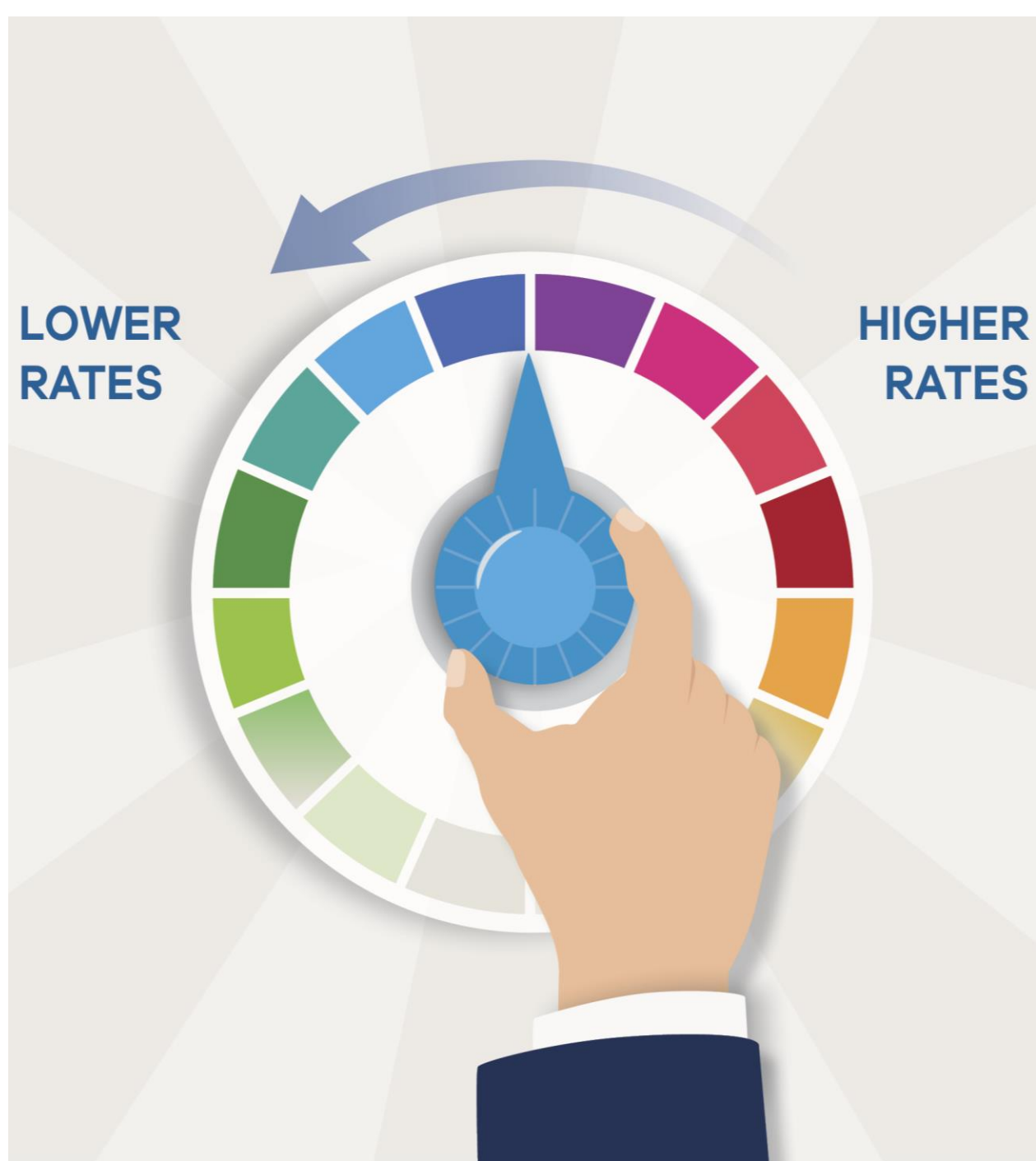
**1. What have we done already to keep rate increases lower?**

**2. Our four proposals**

- Mowing and gardening
- RTS opening hours
- Fees and charges
- Rates remissions

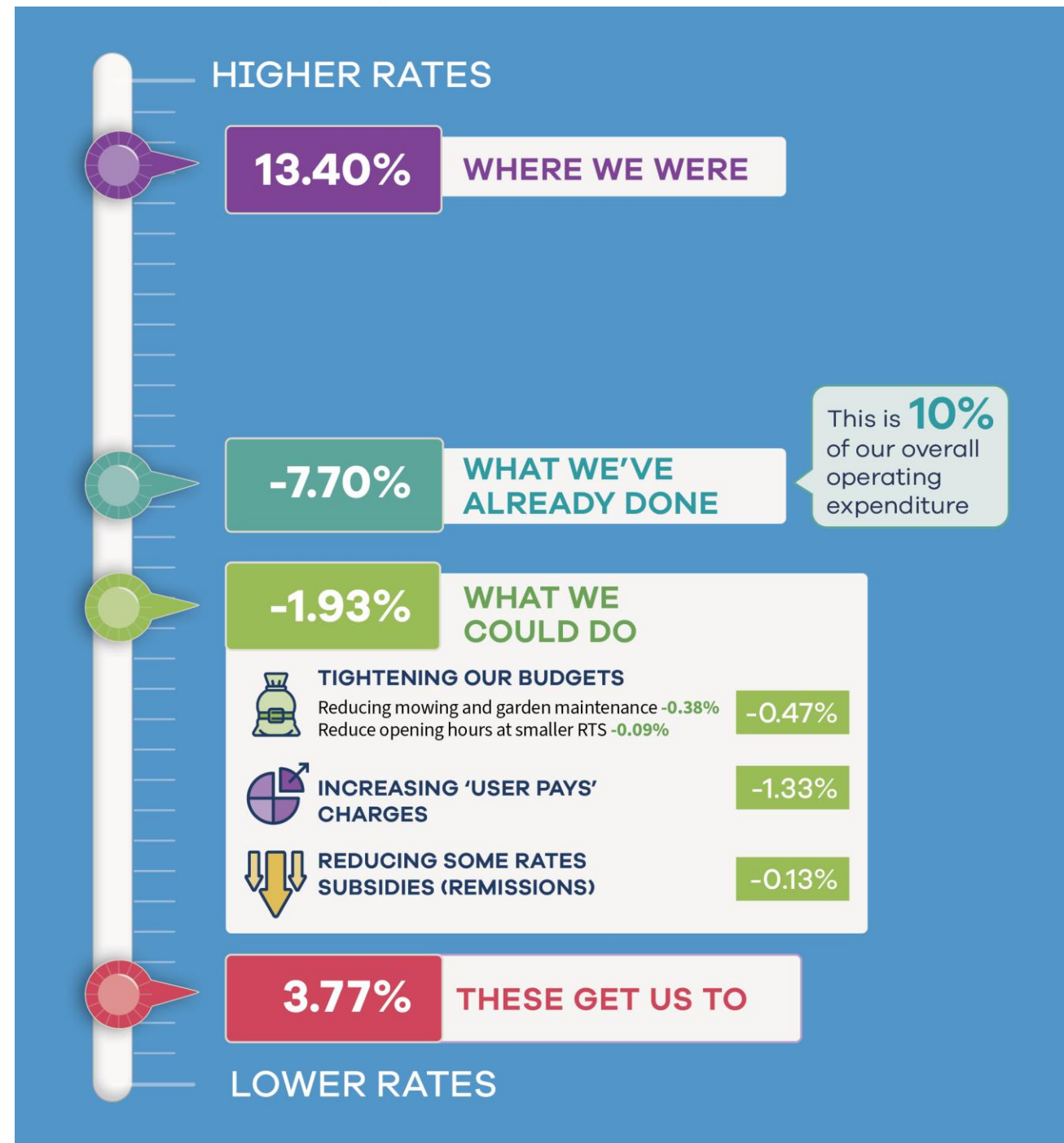
**3. How are rates spent?**

**4. Questions and wrap-up**



# What have we already done to keep rate increases lower?

- **Cut spending** (consultants, staff costs, Mayor's fund)
- **Firmer response** to non-compliance and issuing fines
- **Paused** top-ups to our disaster reserves
- **Spreading** some borrowing over a longer period
- **Changing** how we account for future replacement of new assets
- **Reducing** the amount we collect yearly for asset replacement



# What we're proposing



## Tightening our budgets

Tightening the belt means making some tough decisions about which services matter most – and where we may need to do less.

**This approach reduces costs, but it can mean visible changes to the services people use.**



## Increasing 'user pays' charges

Some services are used more by certain people than others. We often split the bill of our services between ratepayers in general and direct users through fees.

**A user pays approach means that people who directly use a service pay a greater share of its cost.**



## Reducing some rates subsidies (remissions)

Rates remissions are discounts on rates provided in certain situations.

While helpful to individuals who receive them, the cost of those remissions is shared by other ratepayers. We are proposing to remove selected remissions.

**This reduces the burden on other ratepayers but removes some forms of financial relief.**

# PROPOSAL 1:

## Reducing mowing and garden maintenance

OPTION 1 –  
**Keep the current gardens  
and mowing schedule**

OPTION 2 –  
**Reduce service levels**

### **Impact on your rates\***

A reduction of \$17.94 on average (-0.38%) compared to this year

## WHAT WE CURRENTLY DELIVER



Seasonal flower beds



Frequent mowing of parks, road berms, cemeteries and road median strips



Shrub garden maintenance



Annual Onehunga weed spraying

## WHAT WE'RE PROPOSING



Simpler planting with no seasonal flowers



Replacement of shrub beds with grass or hard surfaces



Reduced garden maintenance



Less frequent mowing of parks, median strips, cemeteries and other public spaces. No mowing of most berms



Cancel Onehunga weed spraying

**These changes could save up to \$450,000 per year**

# PROPOSAL 2:

## Reduce opening hours at Coromandel, Matarangi, and Pāuanui Refuse and Recycling Transfer Stations

OPTION 1 –  
**Status quo**

OPTION 2 –  
**Reduce days**

OPTION 3 –  
**Reduce hours**

### Impact on your rates\*

A reduction of \$4.19 on average  
(-0.09%) compared to 2025/26

### Impact on your rates\*

A reduction of \$3.27 on average  
(-0.07%) compared to 2025/26



**Which areas would be impacted?**

**Matarangi - Coromandel town - Pāuanui**



**What would change**

**From 7 DAYS PER WEEK**

8.30am – 4.30pm

(5.30pm during daylight saving)

**TO**

**4 DAYS PER WEEK**

*(Friday, Saturday, Sunday, and Monday)*  
and keep the same hours

**OR**

**7 DAYS PER WEEK**

10am – 3pm opening hours

# PROPOSAL 3:

## Increase fees and introduce new charges

OPTION 1 –  
**Fees would increase to  
match inflation and we'd  
introduce new fees**

OPTION 2 –  
**Increase by average of 13%  
and introduce new fees**

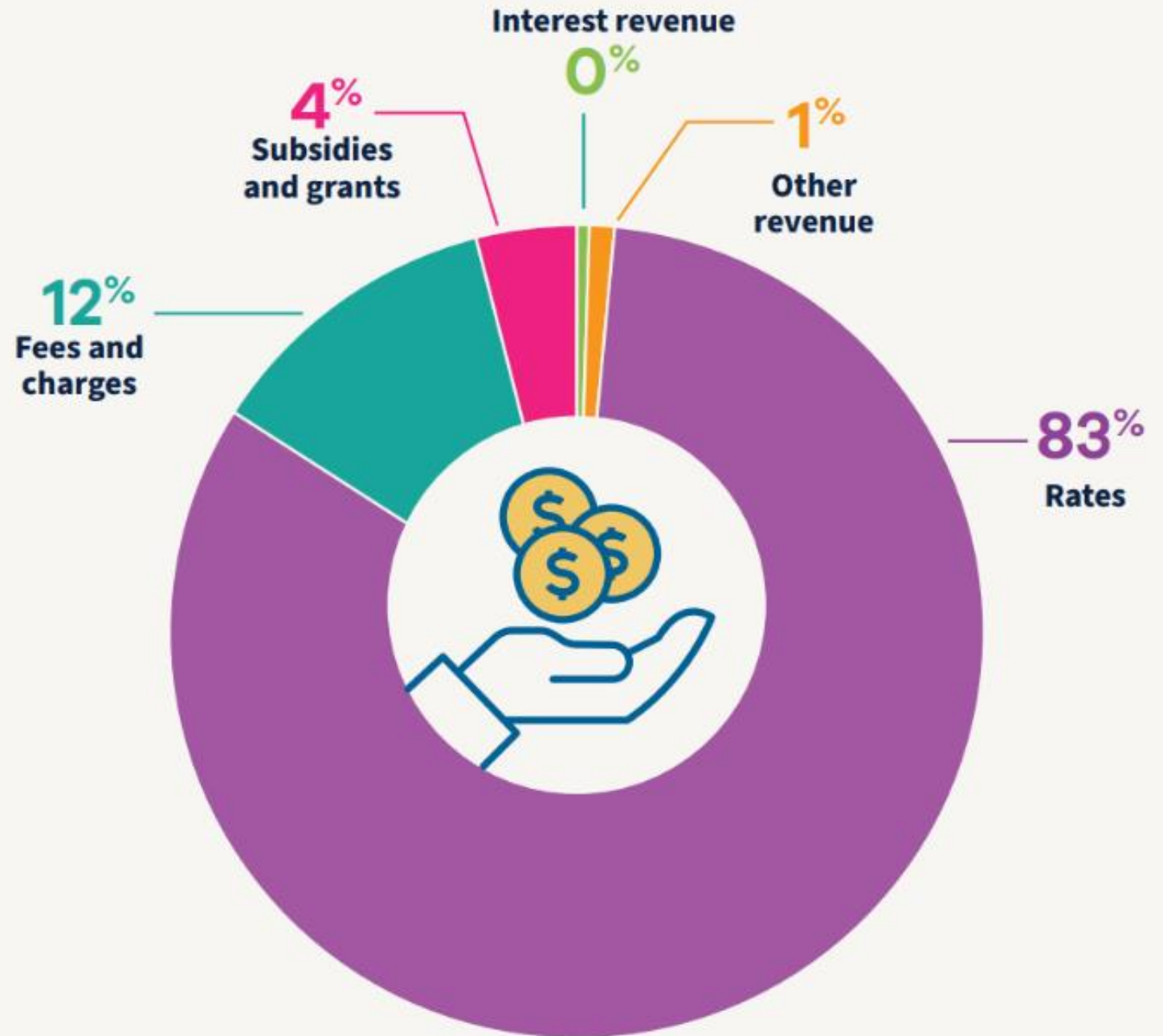
### **Impact on your rates\***

A reduction of \$62.59 on average (1.33%) compared to 2025/26



## What would change

- Average fees **increase ~13%**
- Higher increases for **airfields, harbours, and water consumption**
- **New fees** for boat ramps, wharves, and cemeteries



# PROPOSAL 4:

## Reduce some rates remissions

OPTION 1 –  
**Status quo**

OPTION 2 –  
**Reduction**

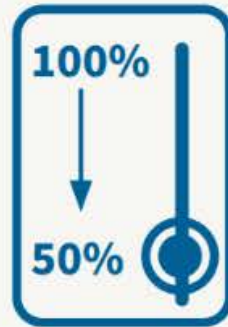
**Impact on your rates\***

A reduction of \$5.98 on average (-0.13%)



## What's changing

As part of this review, we're proposing to change two existing rates remissions:



### Remissions for excess water use.

Reduce the discount for high water bills from a leak or accidental overuse to **50% reduction only**, for up to **two billing periods**.

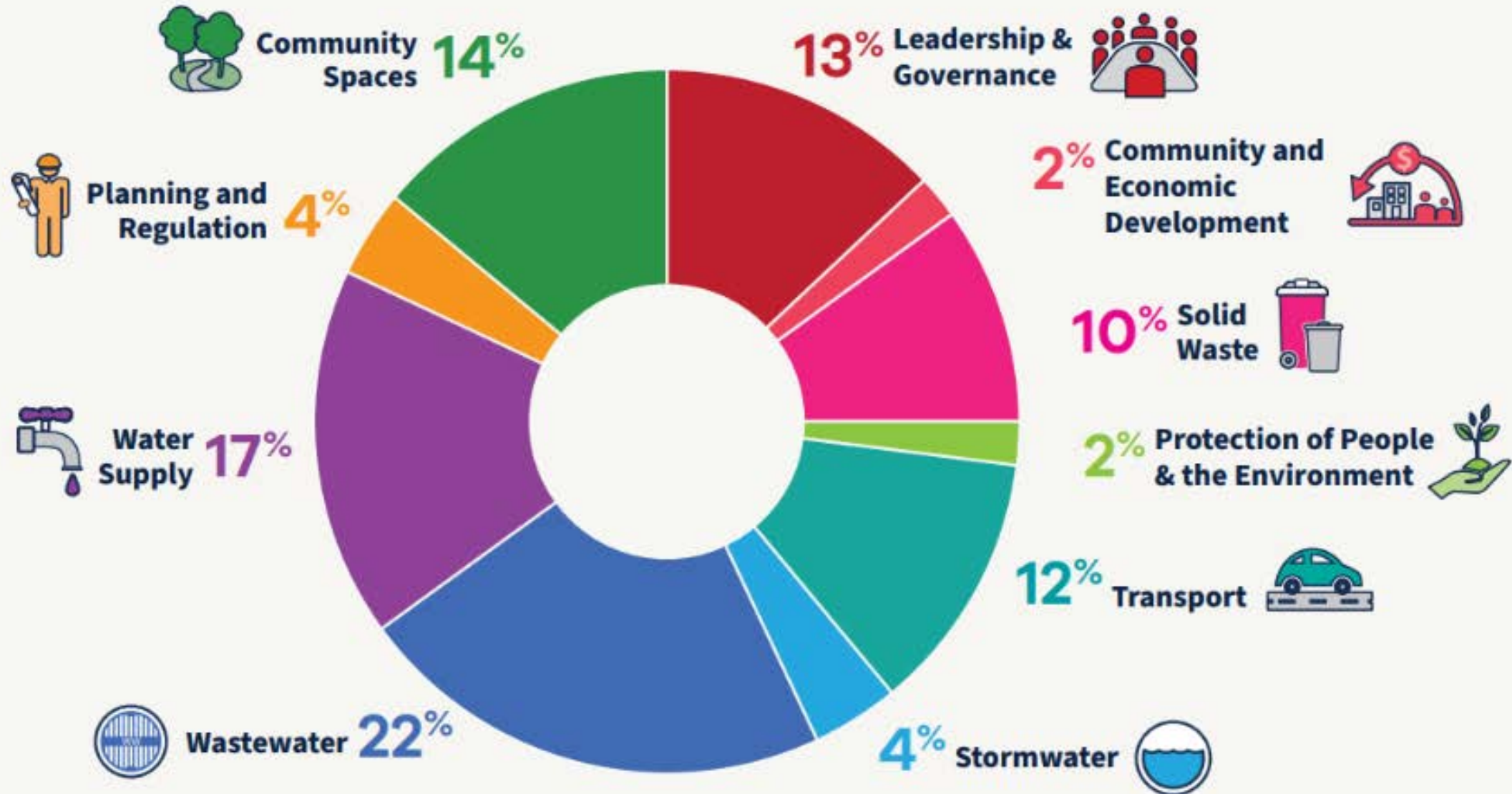


### Remissions for late-payment penalties.

Remove the **14-day waiver** – penalties will apply.

# Where your rates will be spent

If we stick with our proposals, here's what services your rates will be paying for:



# Questions?



We want to know whether these are changes you're okay with, if they help keep your rates bill lower.



**Want more  
detail?**  
He kōrero anō?

If you want further information on any of the proposals in this consultation document, you can read more online at our website: **[tcdc.gov.nz/annualplan26-27](http://tcdc.gov.nz/annualplan26-27)**



# Let us know what you think

## Kōrero Mai

Send us your feedback by **Tuesday 28 April**

Or chat to our Council directly at our **Feedback Forum on 7 May**