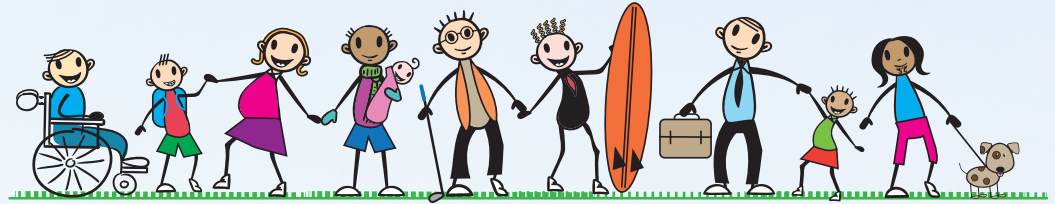


THAMES COMMUNITY PLAN 2020 - 2030

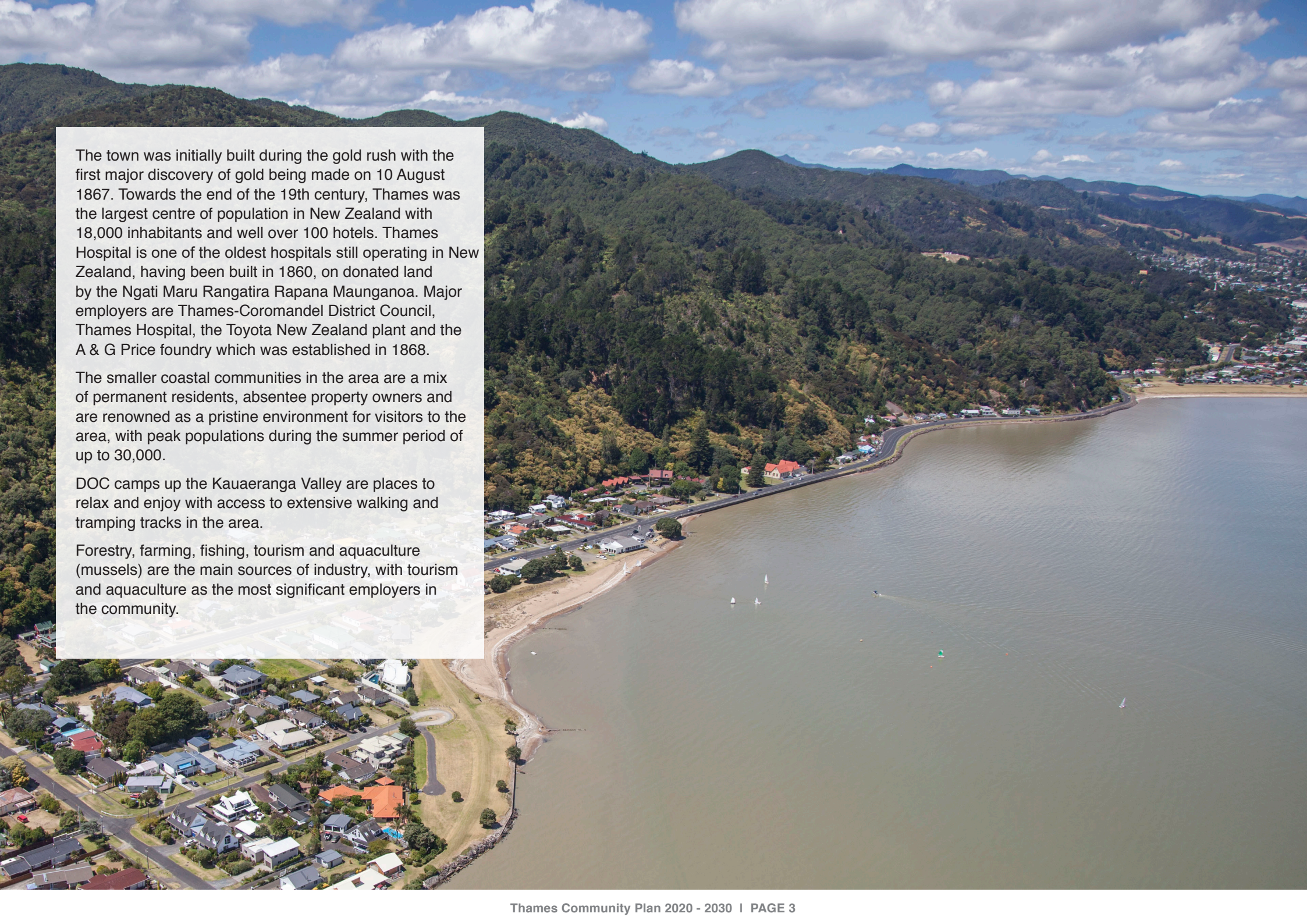
This plan will help Council to understand what is important to the community; allowing Council to make informed decisions on prioritising and funding services and activities through the review of the Long Term Plan.



THAMES WARD

The Thames ward is bordered by the Waikawau River in the north and Hikutaia in the south. The ward includes the main urban settlement of Thames with three rural settlements at Matatoki, Puriri and Hikutaia, and nine coastal settlements at Matatoki, Puriri and Hikutaia, and nine coastal settlements at Ngarimu Bay, Ruamahunga, Tapu, Te Mata, Te Puru, Thornton Bay, Waikawau, Waiomu and Whakatete Bay. Thames is a historical town situated between the calm waters of the Firth of Thames and the majestic ranges of the Coromandel and is valued for its heritage buildings and vibrant café culture. Thames was formed when the two historic towns of Grahamstown and Shortland merged in 1874. Shortland was founded in 1867 in the south and Grahamstown was founded in 1868 in the north.





The town was initially built during the gold rush with the first major discovery of gold being made on 10 August 1867. Towards the end of the 19th century, Thames was the largest centre of population in New Zealand with 18,000 inhabitants and well over 100 hotels. Thames Hospital is one of the oldest hospitals still operating in New Zealand, having been built in 1860, on donated land by the Ngati Maru Rangatira Rapana Maunganoa. Major employers are Thames-Coromandel District Council, Thames Hospital, the Toyota New Zealand plant and the A & G Price foundry which was established in 1868.

The smaller coastal communities in the area are a mix of permanent residents, absentee property owners and are renowned as a pristine environment for visitors to the area, with peak populations during the summer period of up to 30,000.

DOC camps up the Kauaeranga Valley are places to relax and enjoy with access to extensive walking and tramping tracks in the area.

Forestry, farming, fishing, tourism and aquaculture (mussels) are the main sources of industry, with tourism and aquaculture as the most significant employers in the community.

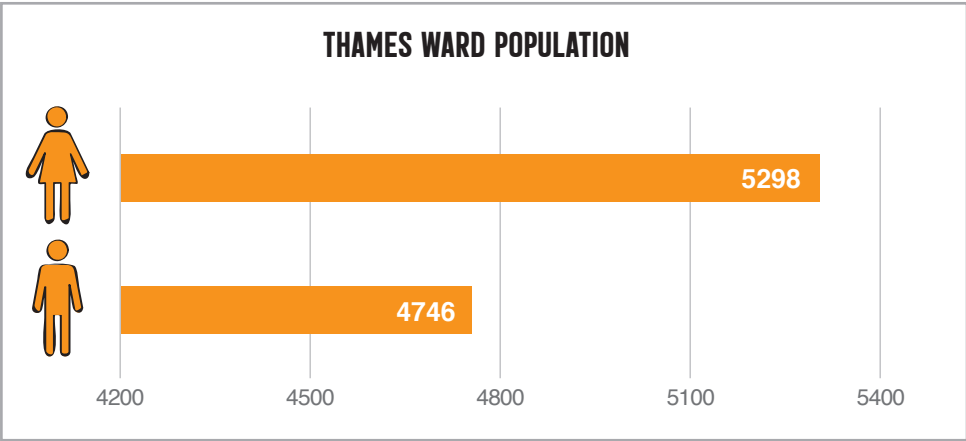
LANDSCAPES AND SITES OF INTEREST



WHAT WE KNOW

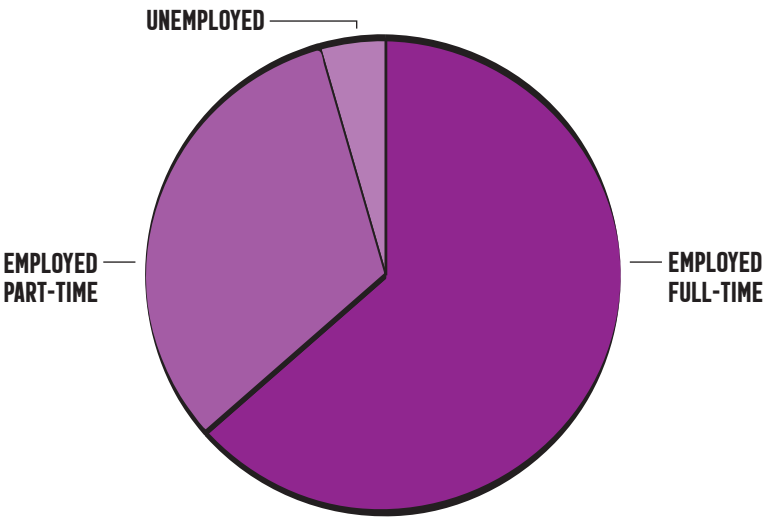
POPULATION

In 2013 the population of the Thames-Coromandel District was **26,181** And the population of Thames ward was **10,044**



EMPLOYMENT

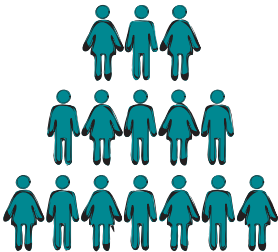
2018 EMPLOYMENT NUMBERS FOR THAMES WARD



LIVING

4,437
Occupied private dwellings

708
Unoccupied private dwellings



ETHNICITY

8,073
New Zealand born

1,944
Maori Descendants

372
Speak Maori

The data above covers the Thames ward and is from the Thames-Coromandel District Community Profile and provides demographic analysis for the District and its suburbs based on results from the 2013 and 2018 census <https://profile.idnz.co.nz/thames-coromandel/home>

COMMUNITY FACILITIES



3 WATERS – WATER SUPPLY, WASTEWATER AND STORMWATER

- Council operates a water supply scheme in Thames, Tararu and Kopu.
- Matatoki, Puriri and Hikutaia rely on reticulated rural supplies.
- Other Thames Coast communities rely on private water supplies and storage tanks.
- Council operates a wastewater scheme in Thames, Tararu and Kopu. All other communities rely on private disposal systems.
- Stormwater systems operate in Thames, Tararu and Kopu. All other communities rely on private disposal systems.
- Thames town has known deficiencies in its ageing reticulation system.



RUBBISH/RECYCLING

- The Thames area is serviced with a rubbish and recycling collection in most locations.
- A refuse transfer station and waste compactor are situated in Thames township. The Council also actively supports “The Seagull Centre”, the re-use centre managed by a trust in Thames.



ROADS, FOOTPATHS AND STREETLIGHTS

- The Thames area has a network of local roading. The roads are maintained to various levels depended on the volume and usage of the road; these vary from sealed roads to gravel/dirt roads. Kerbing channelling and streetlights are provided for in varying degrees through the area. Some communities prefer less light pollution, retaining the natural rural or beach environments.



HALLS/LIBRARIES

- Thames War Memorial Civic Centre is the only Council owned and managed hall in the Thames area.
- There are several community owned and managed halls throughout the wider area.
- Council owns and manages the Thames Library.
- There are four primary schools in Thames for years 1-8 (Parawai, Thames South, Moanataiari and St Francis). There is a High School for years 9-13 at Thames.
- There are three primary schools for years 1-8 in the rural areas of Matatoki, Puriri and Hikutaia.
- There is one primary school for years 1-8 in the coastal area at Te Puru.
- Council owns and manages a community pool in Thames.



RESERVES, PLAYGROUNDS AND PUBLIC TOILETS

- The Council supports sporting activities at Rhodes Park.
- The Thames area has fifteen (15) Council managed toilets, Council operates 91 public toilets across the Coromandel Peninsula.



CEMETERIES

- Council operates and maintains two cemeteries within the Thames ward, Totara Memorial Park Cemetery and Omaha Cemetery situated at Hikutaia.
- Council continues to manage two historic cemeteries, Shortland Cemetery in Thames and Tararu Cemetery at Tararu.



HARBOUR FACILITIES

- Council manages boat ramps at Kopu Quay (Kopu), Ruamahunga Bay (Thames Coast) and Waiomu (Thames Coast).



AIRFIELDS

- Council owns and manages the Thames Airfield which has grassed runways to the south of Thames township.



MEDICAL AND EMERGENCY

- The Thames area is serviced by two medical centres which are both situated in Thames.
- There is a hospital in Thames.
- Volunteer fire services are available through the area based at Thames, Tapu and Puriri.
- St John, Land Search & Rescue and the Westpac helicopter all provide emergency cover to this area.

COMMUNITY ENGAGEMENT

Day to day interaction with the community, a series of focus group meetings and an online survey were undertaken to give the Thames communities the opportunity to tell us what is important to them.

The community was asked to consider *Our People, Our Environment, Our Infrastructure and Our Future*.



ALL THE COMMUNITIES SAID THEY LIKED

- THE BEACHES
- THE SAFE AND CLEAN COMMUNITIES
- THE SCENERY
- THE HISTORY
- THE PEOPLE
- THE SIMPLE, QUIET LIFESTYLE



Whakataukī

Ma te kōrero ka mōhio
Ma te mōhio ka mārama
Ma te mārama ka mātau
Ma te mātau ka ora ai tātou

Through discussion comes awareness
Through awareness comes understanding
Through understanding comes wisdom
Through wisdom comes wellbeing for all



COMMON CONCERNS THROUGHOUT THE COMMUNITIES

OUR PEOPLE

WHAT THE COMMUNITY SAID	WHERE TO FROM HERE	WHAT WOULD THIS LOOK LIKE?
THE COMMUNITY NEEDS MORE AFFORDABLE HOUSING	Council can advocate to Government agencies on behalf of the community for equitable access to affordable housing.	The provision of more affordable housing for the permanent residents.
ACCESS TO SPECIALIST MEDICAL SUPPORT AND SOCIAL SERVICES ARE LIMITED	Council and the community can advocate to District Health Board and health support agencies for access to improved health care and support.	Emphasis on provision of greater social and medical services throughout all sectors of the community.
WE WANT TO RETAIN OUR YOUTH IN THE AREA	Advocating for improved health care, economic development, education and affordable housing will assist in retaining youth in the area. Review Council's 2013 Youth Strategy.	Youth have a sense of belonging and can choose to stay or return to their hometowns.
EMPLOYMENT OPPORTUNITIES IN THE AREA ARE LIMITED	Council will implement its economic development strategy to recognise business opportunities that will assist the local economy and provide employment opportunities.	Increased economic development growth to allow for employment opportunities.
CONTINUED EDUCATION OPPORTUNITIES ARE LIMITED	Council and communities will advocate to education providers who could provide education initiatives.	Provision of continued education opportunities.
LOCAL HISTORY AND A SENSE OF PLACE ARE IMPORTANT	Council will explore how best to acknowledge our history through the local heritage society. Council will explore with Hauraki iwi how best to promote our diverse history.	The community will have an increased knowledge of the diverse heritage of the area.
OUR COMMUNITIES HAVE CONCERNS ABOUT LIVING SAFELY	Council and the community will advocate to NZ Police and Government agencies to increase the level of policing in the Thames ward.	People feel safer within their communities with an increased police presence in place, especially over peak periods.

OUR ENVIRONMENT

WHAT THE COMMUNITY SAID	WHERE TO FROM HERE	WHAT WOULD THIS LOOK LIKE?
INCREASING TOURISM PUTS PRESSURE ON OUR INFRASTRUCTURE AND KEY ATTRACTIONS	<p>Council will work with Destination Coromandel and commercial tourism providers to educate visitors to the region.</p> <p>Council will develop policy and access available funding sources to improve tourism services within the district.</p>	Visitors to the area will be respectful of our natural environment and way of life, encompassing the principals of the Tiaki promise - tiakinewzealand.com
WATER QUALITY OF OUR RIVERS, STREAMS AND OCEAN NEED TO BE IMPROVED.	Council will participate in national freshwater policy initiatives and in the review of the Waikato Regional Coastal Plan.	Improvement of water quality across the coastal marine area so kaimoana/seafood can be safely harvested, and people can swim safely.
OUR NATURAL ENVIRONMENT IS IMPORTANT AND ONGOING PLANT AND PEST MANAGEMENT IS NEEDED	<p>Council will continue to monitor and remove plant and pests on Council land and will work with Department of Conservation, Waikato Regional Council and Community groups on pest management.</p> <p>Greater awareness of Kauri protection.</p>	Proactive, ongoing management of plant and animal pests that threaten the natural environment.
HOW DO WE PROTECT OUR ICONIC LANDSCAPES?	<p>Council will continue to enforce the environmental protection provisions of the District Plan to protect its special landscapes and will participate in national and regional policy initiatives.</p> <p>Council will consult with its communities as to its best adaptive coastal management pathways via the Shoreline Management project.</p> <p>Council will educate where possible and implement and enforce, where appropriate, bylaws to prohibit vehicle access on beaches.</p>	<p>Increased enforcement of the District Plan provisions to protect the iconic landscapes.</p> <p>Safe beach use through appropriate education and bylaw processes.</p>
EXISTING RESERVE SPACE NEEDS TO BE IMPROVED	<p>Council will continue to manage and maintain reserve space through its operational process.</p> <p>Council will consider redevelopment of existing reserve space through Long Term Plan consultation and ongoing community engagement.</p>	Council owned reserves will be maintained and enhanced to provide quality recreational space for communities.
BEAUTIFICATION OF URBAN PRECINCTS AND RESERVES	In consultation with the community, Council will seek to introduce design guidelines.	Urban precinct improvements, with existing reserve space being appropriately planted and outdoor furniture installed in consultation with the individual communities.

OUR INFRASTRUCTURE

WHAT THE COMMUNITY SAID	WHERE TO FROM HERE	WHAT WOULD THIS LOOK LIKE?
THE ROADING NETWORKS, BOTH LOCAL AND STATE HIGHWAY NEED TO BE IMPROVED	<p>Council will advocate to New Zealand Transport Agency to adopt best traffic management strategies for the Peninsula including upgrading the State Highway one-way bridges.</p> <p>Council will advocate for better public transport to public and private service providers.</p> <p>Council will implement its long-term infrastructure management strategy in relation to roading.</p>	Regular maintenance and improvement of state highways and local roads to improve access, prevent wear and tear on vehicles and to be less prone to slippage resulting in temporary isolation during weather events.
OUR COMMUNITIES NEED SAFE FOOTPATHS AND CYCLEWAYS	<p>Council may consider a pedestrian network policy in its long-term infrastructure management strategy.</p> <p>Council may include a mobility policy in its long-term infrastructure management strategy.</p> <p>Council will consider the Thames community's request for additional footpaths through the Long Term Plan process.</p>	People can safely move around their communities.
WATER SUPPLIES TO MEET THE NEEDS OF THE COMMUNITY	<p>Council will ensure that reticulated water supply systems meet the New Zealand drinking water standards.</p> <p>Council will continue to manage and maintain existing systems to ensure an adequate water supply wherever possible.</p>	Safe drinking water available to reticulated communities with limited water restrictions.
STORMWATER DRAINAGE TO PROTECT THE COMMUNITY FROM UNNECESSARY FLOODING IS A PRIORITY	<p>Council will implement its long-term infrastructure management strategy in relation to the three waters (water, wastewater, stormwater).</p> <p>Council will investigate alternate methods of stormwater management.</p>	Flooding from inefficient stormwater drainage reticulation will be mitigated.
OUR COMMUNITY NEED TO BE RESILIENT IN THE FACE OF NATURAL DISASTERS	<p>Council will continue to work with local communities to mitigate the impacts of natural disasters in association with national and regional Emergency Management Civil Defence agencies.</p>	Community response planning to assist with preparedness for emergency events.
MARINE AND RIVER FLOODING CONTROLS NEED TO BE PUT IN PLACE TO PROTECT OUR COMMUNITIES	<p>Council will consult with its communities as to the best adaptive coastal management pathways via the Shoreline Management Project.</p>	Reliable sea defences and erosion controls are in place to protect our communities from marine and river flooding.

(CONTINUED ON NEXT PAGE)

OUR INFRASTRUCTURE (CONTINUED)

WHAT THE COMMUNITY SAID	WHERE TO FROM HERE	WHAT WOULD THIS LOOK LIKE?
WE WANT IMPROVED DIRECTIONAL AND BILINGUAL SIGNAGE	Council will review current directional signage. Replacement or new signage will be bilingual where appropriate.	Directions to destination and local attractions will be clearly signposted. Inclusion of Te Reo Maori on signage throughout the ward.
IMPROVED WASTE MANAGEMENT AND GREEN WASTE FACILITIES	Council will address improved recycling opportunities and waste collection when it reviews its waste management strategy.	Reduction in waste going to landfill.
FASTER, SECURE INTERNET OPTIONS	Council can support the community in advocating for secure fast internet and investigating private provider options.	Most of the Thames ward will have access to a fast and reliable internet service.
RELIABLE POWER SUPPLY	Council will advocate to energy supply providers for improvements to the power network.	Thames ward residents within the power network will be able to connect to a reliable power source with limited power outages.



THE PROJECTS THE COMMUNITIES WOULD LIKE TO SEE HAPPEN

Individuals, community groups and organisations throughout our communities have told us these are the projects they believe should be given priority when Council is considering its Long Term Plan.

THAMES

Airfield

Thames Revitalisation

Rhodes park grandstand
and clubrooms

Playground replacement

Wakatere replacement Porritt Park stage 2

Hauraki Rail Trail extension

WWI monument



COUNCIL PLANS

Where does this Community Plan “fit” with other Council plans?

The Council has several other plans in place.

The Community feedback in this plan will help form the development of Council Plans.



THE LONG TERM PLAN (LTP)

Outlines the overall direction and expected costs of Council activities over a ten-year period. The LTP is prepared every three years. In the intervening years, Council produces an Annual Plan, which serves as an update on the LTP for that year.

THE DISTRICT PLAN

Promotes the sustainable management of natural and physical resources in the Thames-Coromandel District, primarily by managing the effects of land use on the environment. The plan responds to local government issues in terms of community needs and aspirations. If those needs and aspirations change, then plan changes may be needed.

THAMES URBAN DEVELOPMENT STRATEGY

Is a plan that identifies and enhances the unique character and heritage of Thames while providing for future development in a form that will contribute to these qualities.

COMMUNITY PLANS

Capture the shared vision of specific communities and outline the key issues and projects facing that community over the next ten years. The plans provide a clear focus for Community Boards and Committees to progress key issues within their areas.

RESERVE MANAGEMENT PLANS

Reserve Management Plans contain policies that apply to all reserves that are owned and/or administered by Thames-Coromandel District Council. This allows for a consistent approach to the management of reserves.



WHAT HAPPENS NOW?

Upon completion of the final consultation and the plan being finalised the Thames Community Board will adopt the Community Plan.

While some key issues and projects in this document will require more resources than are available, and may take longer than a few years to realise, we can be assured there is a plan in place.

The Thames Community Board and communities will continue to work with Council to prioritise issues and projects through planning such as the Long Term Plan (LTP), Annual Plan and work programmes.

Please contact the Thames Community Board or Thames-Coromandel District Council if you would like any further information.

WE LOOK FORWARD TO HEARING FROM YOU!