



# Minutes

## SMP Coastal Panel Meeting 9 – Adaptation Pathways, Thresholds and Triggers

- Times & Dates: **Thames Coast 12:45pm-3:45pm Wednesday 24/1121**
- Venues: **Thames Council Chambers or MS Teams**
- Chairperson: **Peter Revell (Thames),**
- Attendees: **TCDC - Amon Martin, Jamie Boyle, Karen Moffatt-McLeod (Via MS Teams) Mitchell King (Via MS Teams)**  
**SMP Consultant (Royal HaskoningDHV) – Sian John, Nick Lewis (Via MS Teams)**
- Coastal Panel Members:** Chris Dale -CD, April Chang - AC, Clive Monds - CM, Murray Wakelin - MW, Ron Jamieson - RJ, via MS Teams: Cherie Staples - CS, Jordan Downes – JD, Eric Carter – EC
- WRC:** Via MS Teams - Rick Liefing, Adam Munro
- Apologies: **Peter Feran – not in attendance**, Jordan Downes will be 15mins Late

### Meeting Objective

- To review Policy Unit adaptation pathways based on feedback received and to begin the process of defining pathway thresholds and triggers

### Agenda Items

1. Introduction.
2. Progress:
  - a. Minutes of Meeting 8 (September 2021).

Minutes from previous meeting accepted

PR – asked is Waka Kotahi have come back since last meeting with more information.

SJ - David Grieg (Waka Kotahi) have said they will become more involved and have assigned a new contact person.

Action - follow up with David Grieg

b. Review of Actions (see page 2).

Actions:

9 – on agenda for today – was for East Coast predominantly

13 – some discussions on presenting to WRC through the climate action committee first – rather than the regional transport committee. Some WRC councillors on both committees.

28 – included in presentation today

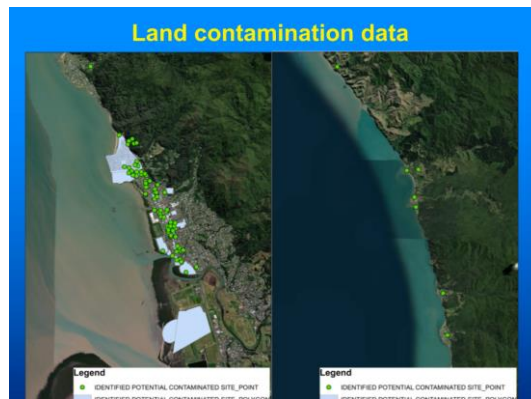
30 – included in presentation today

33 – Not just about comms – it is comms & engagement. More to come until the end of the project. Update panels on overall project early next year. PR would like draft plan for next meeting

34 – not for this area

31, 32, 35, 36, 37 - Completed

c. Short presentation on East coast storm events (East Coast CPs only), locations of waste disposal sites and sites of cultural significance.



Information behind this is useful as it identifies sites of contamination.

This information will be included in the final report.

Majority of sites is about 'potential' rather than confirmed areas of contamination.

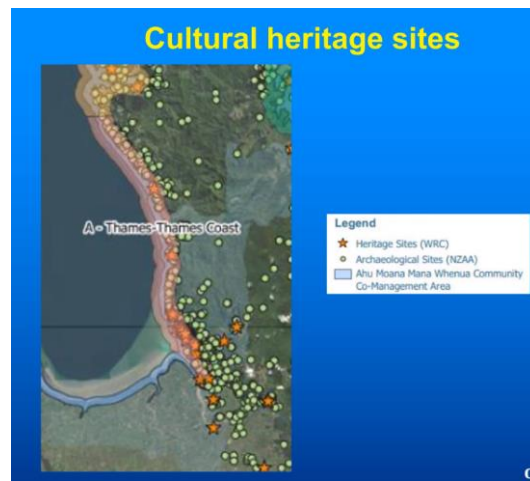
A lot of sites are confidential (WRC holds info on heritage sites)

Green – unidentified potential Contamination, Grey dots – Potential contamination (but not from landfill) could be sheep dips, spraying etc

There is a database behind this info with more information

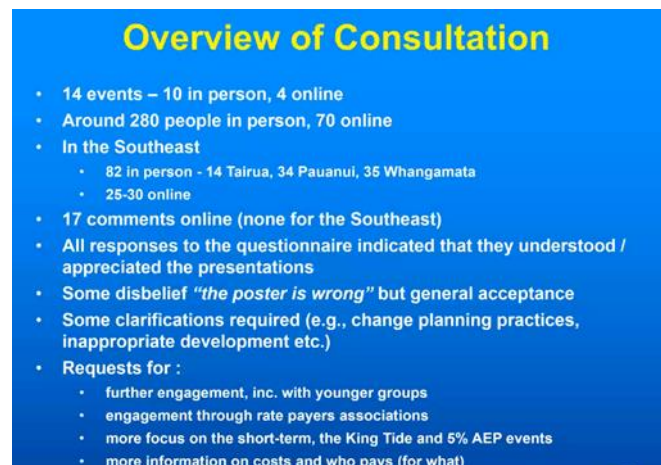
RL - WRC will be publishing a report soon that shows 18 coastal landfills (coastal broadly speaking given proximity to the coast - around entire WRC coastline) and ranked them according to relative risk posed to human health and the environment. WRC has a whole team that looks at contaminated land and are looking to put on a mapping survey so people can click on a property and see potential contamination.

AM- could be useful if there is more, we need to think about in some areas.



Red stars are Heritage sites  
Green dots – archaeological sites

3. Community consultation:
  - a. Overview.
  - b. Coastal Panel reflections.



Well received by people who wanted further consultation. Not well attended in some areas. Map on TCDC website launched a comment tool – you can put a pin in it and make your comments for that area or pull up the PU poster and make a comment, 17 comments to date – will stay live.

Comments – understood what was said and appreciated.

How to reach younger people is a challenge for all of us to get more people involved.

Sticky notes comments for posters were specific to individual PU's.

AM – big 2 weekends, 10 community events, staff presentation, 4 public online meetings. Thames most well attended in person, lots of relevant feedback.

Online meetings have been recorded.

PR – spoke to a lot of people who just didn't understand. People talked a lot about 'pumps' CD – since the open day at Te Puru people have been ringing Chris to see if he had posters, as they wanted to look at them in more depth.

SJ – we need to engage longer with people, need to target groups like rate payers assoc's, When we go out next time, we need to talk more about the King Tides/20yr events (as 100yr events are too far out for people) also need more interactive presentations. Also would suggest a letter drop.

AC – feedback was good from people at the Thames, people are interested and engaged.  
 CM?? – would you make presentations to the High schools' senior classes?  
 AM – yes definitely consider and will make contact with High Schools this year to gain interest for doing something next year.  
 AC - **Will raise with the Chair of the Thames School Board**  
 CS - I would think that the Min of Ed would need to be asked before that type of delivery would be allowed  
 JB – thinks we don't – but we will check

**Overview of consultation**

- Maintaining access is imperative for local communities, both SH25 and local roads
- Suggestions:
  - Set funds aside now for/in those locations where defence is advocated
  - Older people, and those more able, to pay more
  - Developers to make funding contributions
  - Incentives to move to higher ground (e.g., Tararu)
- Diverse views:
  - Include 'provide space for nature' for all soft foreshores
  - Hard structures for necessary infrastructure, balanced by no protection for private property
  - ...will Whangamata have to keep paying for the Thames Coast, rather than concentrating on Whangamata?

EC – need to be very specific (site specific) for trigger points etc in high-risk areas – specific to each property e.g. Te Puru. The story is told about our property if it is specific to it

CM?? – differentiate private / public, where private landowners on foreshore can protect their own property – rather than wait for territorial authority.

CD – what we have now is tolerable, what happens in 50yrs doesn't matter as we won't be here – a common thought from property owners in the area.

PR – someone must do it at some point – as we won't be around in 100 years time.

c. Review of adaptation options and pathways.

**PU1** – Kopu: aligns with thinking  
**PU1** – Rhodes Park: aligns with thinking  
**PU2** – Thames:

**Comments:**

- **Fill the gaps in defences now and build higher later**
- Raising the footpath could reduce risk at low cost
- Create a clean fill stockpile site for ratepayers to use to build banks up
- Dredge the Waihou?
- Concern over water escape during flooding through the bund (pumps & drains)
- Pump for Victoria Park (50 years in the making)?
- **Shops, services, exits are a priority** – a thriving place to work and live
- **Plan to protect Thames** (from multiple flooding events)
- **Stop issuing building consents for major builds / in low lying areas**
- Provide certainty around habitable floor levels
- Major structural proposals for Thames would be disastrous for the amenity of the Thames foreshore – may require mangrove or property removal and would change the character of the town
- Maintain and rehabilitate mangroves
- Preference for adaptation or retreat over hard structures, except where necessary to prevent the loss of significant infrastructure (e.g., roads)
- Is the defence of Thames affordable?

More comments were related to 'protecting'

RJ – how are you going to take all of this feedback and make a decision on the recommendation?

SJ – most of the comments support the pathway that the panel suggested – so we would take this forward.

AM – detailed designs come later after a preferred pathway has been adopted  
The concept designs were look at things such as what it would take, could look like and indicative costs.

EC – if people understood the cost and what it would look like, it might change their thinking

AC – we are missing the vast majority of what people think – without engaging better with the community (what was done barely scraped the surface). How do we get better engagement and make people realise – perhaps that it will affect their kids etc

PR agrees with EC about being clearer on what we show people and make it clearer (visually) and different scenario's for the pathways we are recommending.

PR – in any of the policy units are there any where the commentary is different from the proposed pathway? This might speed this up

JB – we need to present more than one option in some area's

PR requested for PR, RJ & AM to have a conversation afterwards about concept designs

PU – 3 Moanataiari – no preferred pathway given.

---

### Comments:

- Stop issuing building consents in low lying areas
- Support a new seawall and protection of the SH
- **Significant issue with pumping water out** (to the SW)
- For change planning practices, add retrofit for relocate / retreat
- **Beyond retreat, add regenerate / rejuvenate wetland to protect cultural, recreational and ecological value, and provide a buffer to the highway**
- The school needs to be protected
- Need to consider/explain the additional complexities relating to groundwater, stormwater and subsidence in reclaimed areas

---

Show a preferred pathway for retreat – then go back to the local community for focused consultation for this area.

CM– we have to have a plan of where they can go – before we tell them that this is the best pathway.

AC – RMA to come with views on Managed Retreat

AM – Presentation by Belinda Story on how to faze managed retreat – we could look at her coming in to present.

MK – currently a special plan underway for Thames that includes retreat in some areas and growth in others. Community engagement from 6<sup>th</sup> December. Hopes to show a draft in about a week.

PR – would like a session about managed retreat and what it looks like.

PU – 4 Tararu (South of Wilson St) aligns with thinking

### Comments:

- **Road essential to township, needs to be maintained**
- **Emergency response is important**
- Practical advice required on what to do if access is compromised
- Issue is getting the water out
- Issues with drainage
- Weak link for erosion
- Existing rock/concrete wall needs to be maintained
- Requires a proper protection project, not ad hoc response

PU- 5 North of Wilson St - aligns with thinking

---

### Comments:

- **Drainage onto the beach is inadequate** / blocks quickly – poor maintenance of storm drains and flow paths
  - Change planning practices should be more specific – no new consents / no new subdivisions / no residential replacement
  - Needs careful coordination of the groups involved (e.g., end of Rennie St, also issues with flood protection and drainage)
- 

PU – 6 Tararu to Whakatete Bay aligns with thinking

### Comments:

- Allow NZTA to push slips from the road onto the foreshore
- Rock erosion protection design (for SH25) is flawed

SJ – all comments that relate to Waka Kotahi or WRC will be packaged up and forwarded to them

PU – 8 Ngarimu Bay / Thornton Bay – can update pathway to address the beach driving issue's

### Comments:

- Seawall at Thornton Bay requires up keep – cracks, pieces missing etc.
- **Stop people driving over the sand embankment onto the beach in Ngarimu Bay – designate a boat ramp**
- Only allow limited access for launching at the southern end of the beach
- Dunes need to be able to migrate in the face of erosion – policies need to accommodate natural processes
- Retaining wall a north end of Ngarimu Bay needs repair – reported (to WK via WRC) but no response
- Seawall between Ngarimu Bay and Thornton Bay needs repair

PU- 9 Te Puru South of the Boat Ramp – presented alternative pathways.

### Comments:

- Use KT effect/time as a trigger
- Modelling OTT and should be aligned with WRC's – 2018 storm caused no damage to first line of properties in the south – accreting coast
- Issues related to Hoata Creek are relevant
- Sediment recycling needs to follow guidance – sand on sand / rock on rock
- Need flood protection now – flood gate a walkway end of Sarjants Road

PU-10 Te Puru North of the Boat Ramp - presented alternative pathways.

### Comments:

- Support for proposed adaptation pathway
- Plan to encourage landowners to self manage – lift dwellings
- Support sediment replenishment and soft bunding, couple with long term retreat
- Engagement with iwi required – future management plans for Seaview Av reserves
- Plans need to complement tsunami disaster plan (re. Community Hall)
- Do not remove river gravel from Te Puru – leave it at the river mouth for natural processes to occur (drift south)
- Reference to changing planning practices should be more specific (e.g., do not allow development)

Defence options maybe more feasible – as easier and lower cost than Moanataiari

Following align with proposed pathway in the majority of the feedback

PU- 11 Te Puru to Waiomu

PU – 12 Waiomu

PU – 13 Waiomu to Tapu



PU – 14 Tapu  
 PU- 15 Te Mata  
 PU – 16 Te Mata to Waikawau

PU-17 Waikawau

### Comments:

- New investment may be inappropriate, but there is a balance to be struck
- Many open space assets (reserves) can be retained and can be invested in on a “no regrets” basis

PU18 - Kereta align with proposed pathway

4. Setting thresholds and triggers:
  - a. Presentation

## DAPP thresholds, triggers and signals

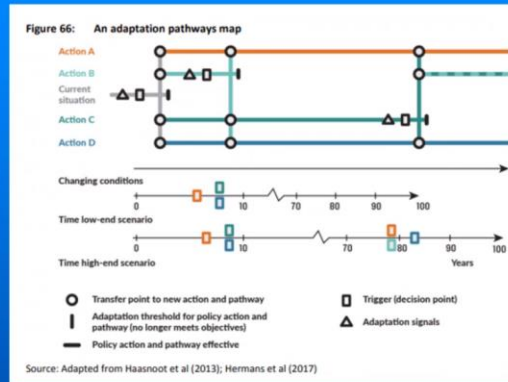
**Threshold** – the point at which a hazard is not tolerable, or the adaptation option (Action) fails to meet its objectives.

Consider:

- Hazard extent (cm or m)
- Event frequency
- Insurance retreat
- Asset end of life

**Trigger** – decision point – the precursor to a particular ‘transfer point’ in advance of a threshold.

**Signal** – an event which indicates that a trigger is or may be about to occur. If/when a signal occurs, stakeholders should prepare for adaptation.



Focus on Thresholds today (triggers can be done later) Use “Assets at Risk’ Paper to assist. Information on frequency changes.

## Approach to determining thresholds, triggers and signals

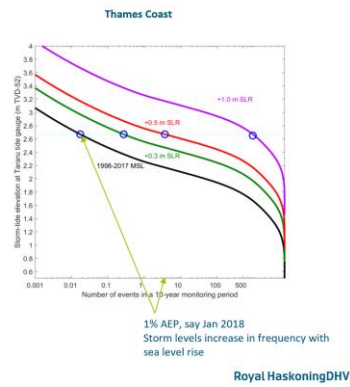
### Principles

- Draft thresholds and triggers are to be developed by the **Coastal Panels**
  - Then sense checked by the TAG and wider community
- Focus will be on determining ‘thresholds’ first and then ‘triggers’
  - Signals can wait – these can be science/engineering derived
- Representative, or key, PUs have been selected for discussion
  - Not those where more work is to be done

### Steps – for each Policy Unit

1. Information review:
  - a. Identify the hazard/s and the sequence in which they occur
  - b. Consider assets/values at risk and the ‘condition’ and ‘age’ of critical infrastructure, including existing defences
  - c. Review rates/extents of predicted change (e.g., 20cm increments of SLR for KT, 5% and 1% AEP events)
  - d. Consider the changing frequency of events
2. Assessment:
  - a. Reassess tolerances
  - b. Propose thresholds for each pathway
  - c. Propose triggers for each threshold

and repeat



b. Example Policy Units.

NL: can show the maps in Increments with SLR, King Tides and 100 in 100yr storm

**Thames PU2**

Change between 400m and 600ml King tide



20 year storm with no SLR– current risk – impact 713 dwellings



Low lying foreshore then topography raises rapidly – so not a lot more inundation for more SLR/Storm, events

0.4m seems to be the threshold, (accept being flooded occasionally in Thames for the next ..... years e.g. 30 years)

Why wait for it to happen – the threshold can be set lower – or we can start now?

EC – even at KT with storm surge it comes up – we have already reached the threshold.

This is our major asset.



JD – we need to start the process now – as it is a long process

EC - we have reached threshold in Kopu/Rhodes park/ Thames and to a point Moanataiari and south Te Puru and along with the other factors at Moanataiari so as not to belittle the problems there they are as important as Thames but hold no Council assets.

RJ put the motion: ""That this panel agrees that Thames [policy unit] has reached the threshold for immediate climate change action to be taken by council." Voted and carried 6 to 3.

AM - in the terms of reference there is guidance directing us to obtain a consensus, therefore we should spend more time trying to achieve this.

MW - Tararu tide gauge - Any agreed action needs to be evidence-based, & well communicated with the public so as to allow them the opportunity to be part of the journey. (especially since we're talking of building a significant structure at significant financial cost)

SJ - agreed with MW comments & stated that the available data from the Tararu Tide Gauge is in question in regard to its reliability.

AM & RJ both went on to say that was correct, & the Gauge is owned by WRC who are currently in the process of replacing it with potentially two gauges to check on accuracy of recordings going forward.

RJ – WRC are looking at where else in the Coromandel that tide gauges can be put in to ensure the correct/relevant information is gathered

### **Moanataiari PU3**

600ml King Tide



1m slr with King Tide



Not a hazard in the short term

400ml SLR with Storm event (1 in 20yr)



Water coming in over the top and filling up the area – as houses are below the waterline.  
 Hazard – significantly deep water

200ml SLR in 100yr storm



JB – ask residents if they can tolerate that amount of flooding again (happened in 2018)  
 AC – contamination issues as well  
 EC – not as urgent at Thames – but should be next in line  
 AM – disagrees – risk is higher (even though less people effected)

0.2m could be a threshold here (where as Thames is now)

EC – how many times is it going to come over the the next 10 years

SJ – threshold 0.4m (threshold for retreat), 200ml is of needing to do somethings, signal is the 2018  
 PR – thinks AM is suggesting 0.2m is the threshold.  
 SJ – are saying we need to change the planning now.

**Te Puru PU9**

Risk is higher in Te Puru South

King tide present



an issue  
 top? In  
 the point  
 storm.  
 practices

600ml SLR & King tide



20 yr storm – present



400ml is tipping point



Plus erosion problems

What is threshold to move from sediment recycling to new sea wall?

CD- Te Puru North residences have said it is tolerable – they don't want a wall  
 Te Puru South – needs to be a shutting in – to keep water out of Te Puru south  
 Consensus is that if we keep cleaning the river, putting the sand etc in – a natural reef will keep forming to protect.

EC - Threshold is not when they can't live in their houses in 20yr time – even though they don't want anything done now.

CD - Council needs to have the comeback – that there was this option

EC – needs to be put on the Lim

AM - a hundred year storm could be tomorrow (it's a probability – just because the last one was 2018 – doesn't mean the next one doesn't happen for 100 years)

CD – not at threshold now for Te Puru in his opinion. 2018 – there was some damage done, but most said it was tolerable.

PR – if there was another 2018 event in the next 5 years – would that change peoples attitude?

CD – I don't think so – provided we close the area to the south.

PR – trigger point may be insurance retreat.

EC – threshold is now in Te Puru South – leave it to insurance retreat

CM – I agree with EC's proposal. If you build the bund you need to put in provision to pump out water – particularly if you get a rain event as well.

Waiomu PU12 – not covered in the time

Ngarimu Bay, Thornton Bay PU8 – not covered in the time

5. Next Meeting (19th January 2021)

Meeting Closed 3.55pm

**Actions Table – SMP 8**

No.	Action	Responsible	Status
9	Timeline of storm events for the East coast sought.	JB/WRC RHDHV	Information provided to TCDC/RHDHV for inclusion in the Coastal Environment Report.  Brief presentation on the agenda for the East Coast CPs.
13	Awareness of the SMP Project to be raised with the Regional Transport Committee	Project Office	In progress - presentation tentatively proposed for Oct 2021 did not occur. Matter to be discussed with Tony Fox re. appropriate timing.
28	Obtain WRC mapping for tip sites around the peninsula that could be used to inform the risk assessment	WRC/Project Office	Completed. Information provided to RHDHV for inclusion in the Coastal Environment Report.  Brief presentation on the agenda.
30	Provide maps for areas of cultural significance	Project Office	Brief presentation on the agenda. Information to be uploaded to project shared folder subsequently.
31	Definition posters for the open days (icons included?)	Project Office	Complete
32	Include on posters if the solution is for erosion or inundation	Project Office	Complete
33	Communications Plan	AM/CB	Plan implemented for open days and now to be updated re. work to date and steps to project close

34	Kuaotunu West – re-work the posters and send back out to the group before printing. Also add to next TAG meeting for discussion	Project Office/SJ AM	Posters revised and provided Discussion at TAG meeting to follow
35	Reassess PU 118 (Southeast) – look at King Tide data and access issues	Project Office	Complete
36	Change public consultations days and times for Western side of coromandel peninsula	AM/KMM	Complete
37	Update (PU 68 & 69) with options and send to Stephanie for further comment	Project Office	Complete
38	PU120 (SE) most of the feedback is to defend. Update pathway to reflect	SJ/Project Office	
39	PU127 (SE) Update sediment recycling and beach push ups on the pathway proposals	SJ/Project Office	
40	WRC to provide a frequency assessment for Whitianga Tide Gauge (to be assessed by NIWA).	RL/WRC	
41	Follow up with David Grieg – Waka Kotahi on their engagement in this process and follow up from presentation at last Thames meeting	AM/SJ	