



# Minutes

## SMP Coastal Panel Meeting 8 – Adaptation Pathways

Times & Dates:	Coromandel to Kennedy Bay 9:30-12:30pm Friday 01/10/21
Venues:	Coromandel Council Office Board Room or MS Teams
Chairperson:	<b>Coastal Panel Chair:</b> Jan Autumn
Attendees:	<b>TCDC</b> - Amon Martin <b>SMP Consultant (Royal HaskoningDHV)</b> via MS Teams– Sian John, Nick Lewis <b>Coastal Panel Members:</b> Kate James, Jan Autumn, Neville Cameron, Kim Brett, David Currie <b>WRC:</b> Adam Munro (via MS Teams)
Apologies:	Karen Moffatt-McLeod (TCDC), Stephanie Palmer (joined for last hour), Dean Jenkins, Michael Donoghue, Nicole Ward, Jamie Boyle

### Meeting Objective

- To review adaptation options and pathways for each Policy Unit.

### Agenda Items

1. **Welcome and introduction to the session.**
2. **Progress:**
  - a. Minutes of Meeting 7 (July 2021). Minutes adopted by the Panel.
  - b. Review of Actions

9 – NL will be completed by next CP meeting

13 – AM – have had meetings with Waka Kotahi – presenting to Thames CP meeting this week. Will share info that goes to Thames with other panels. Encompassing talks on whole of State Highway.

16 – AM spoke with Paul M – mostly interested in how pathways will be presented to the community. Preferred pathways may give the idea that we have made the decisions (SG agreed). Will impact development potential – Ngati Maru have land interests

Joe Davis – ‘not just our issue to decide on’ – but it is our rohe and need to have input. Thinks it is more an engineering problem. Suggested talk to Hopper developments about what ideas they may have.

Jamie Watson – wanted Paul M or others to guide how he should be involved.

Some issues are specific to the landowners and people effected – so discussions need to be with them, not just iwi.

Unlikely to have Iwi representative on these Coastal panels. GO and Joe Davis catching up tomorrow. AM – Joe suggested to bring in people like Hoppers into the conversations. GO - Do we have any mapping of cultural areas of significance? SJ – yes these have been mapped for each CP area. Can't say if they are comprehensive, some locations of importance to iwi are not recorded in this way.

17 – completed

24 – completed

25 – Item to cover today

26 – being done

27 – Drafted a comms plan with key messages for the public open days rather than bullet points. Key messages can be shared with CP's. Governance committee will review and approve

28 – JB – will follow up. WRC did a mapping site and graded in terms of risk matrix – send around prior to the next meeting

29 – Meeting with JD today

### **3. Reflections on the process so far.**

AM – made good progress.

“Finish of the Start” the project and plan being developed is only the start of the work required. This is a good direction setting, but implementations of the project will be on-going for years. There needs to be some acceptance of what the project will and won't achieve. Whole lot of other work streams that will follow on from the work we are doing – so doesn't mean that things won't be done. Acknowledging the amount of time and contribution the panels have made to the process.

NC – with climate change we will see in the short term more storm events which will affect our coastal areas. Will be sea level rise in the long term.

KB – Not so important for me right now but will be in the future (for grandkids), important that this is recorded.

JA – Port Jackson Road was not taken into consideration in the homework set from last meeting, needs to be included as important. Stone house is an historic building.

KJ – enjoyed being part of important work (and fascinating). Help people understand why some areas are trying to revert to how they were historically.

### **4. Review of adaptation options and pathways.**

Inputs:

- a. Coastal Panel feedback.
- b. Outputs from the Third Pass Risk Assessment.

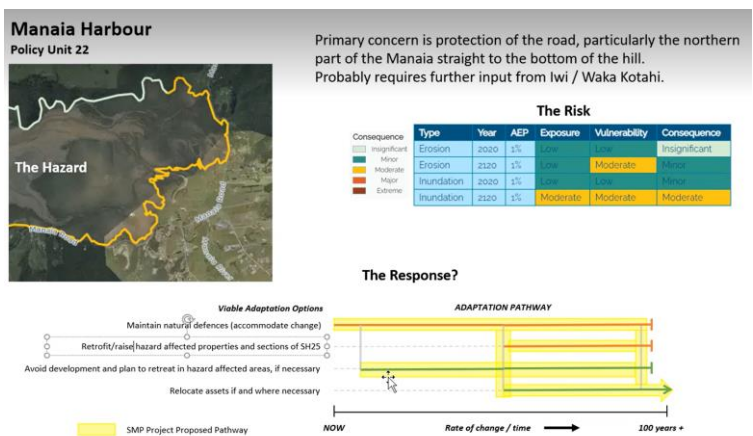


SJ – These are the posters to present at the open days. They talk about the Hazard and the Risk. Plus, the proposed pathways / directions

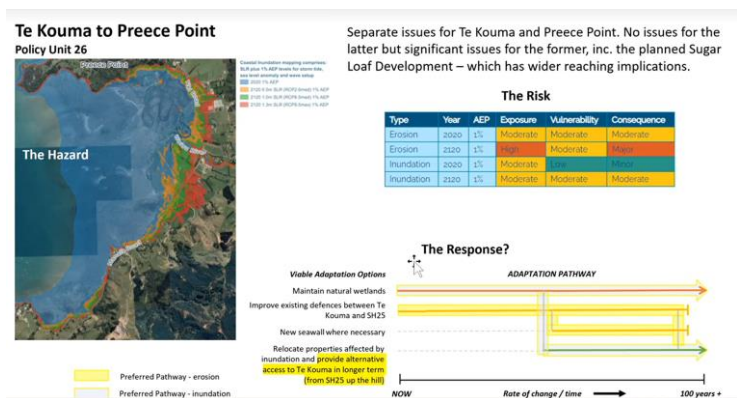
Risk table will be updated to include TPRA which has some subtleties (table currently shows SPRA) it will show more graduation of time.

Will also include a key or chart for the public.

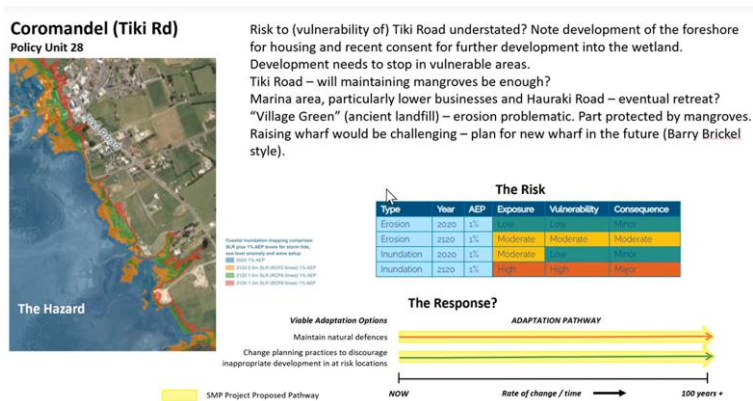
We don't have times on the timeline as it is the triggers that will be put in when decided. The CP comments at the top will not be shown on the posters – they are there for today's meeting only. – the 'response' is where we need to get the public feedback. What won't be on the poster are the comments from the panels



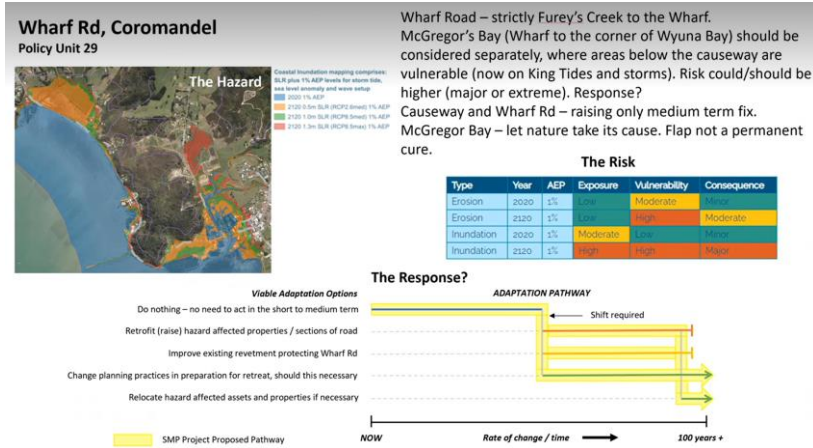
Relocation of the road was objected to by local community some years ago – so needs early consultation. Need to show where not to build on the map – Goldfields Road to Te Kouma Hill Rd SJ – will look at WRC Inundation tool JA – avoid development needs to be better specified as to what sort of development e.g. dwellings



No issues for the latter (area) but significant issues for the former in terms of Sugar Loaf Development

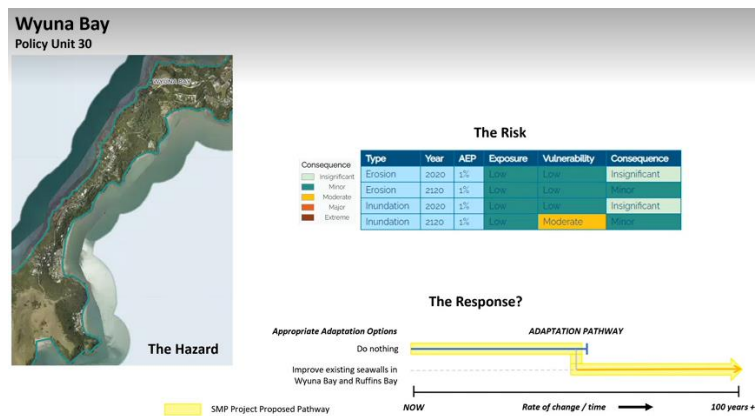


Recent consents for development – need to look at the level of vulnerability to reflect this Can we feed this into the process earlier? AM – new houses may have been consented some time ago, rather than it being 'new' developments. JA – some applications for subdivision consents did go through in 2020. (Koromiko) Tiki Rd – Mangroves may not be enough as a natural defence – what else can we do?

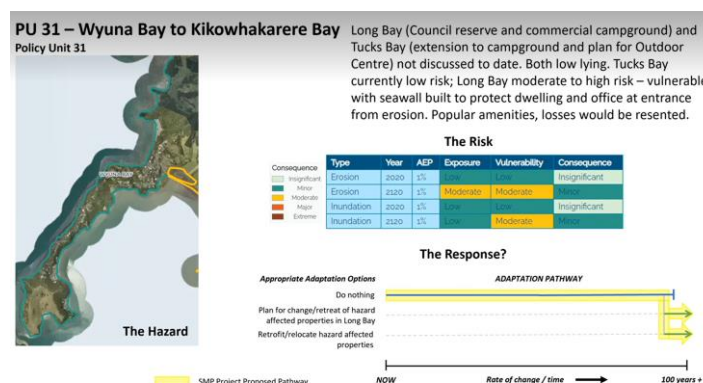


Hauraki Rd – there may be a need for retreat (eventually) – was not given as an option

PU's 28 & 29 issues overlap in some areas and 2 distinct areas within PU 29 with different approaches. Causeway, Wharf area and McGregor Bay – should the risk/vulnerability be higher? Causeway is built on a sandbar – so wouldn't take much to wash it away. Haven't included for allowing space for nature as an option and perhaps an alternative route.

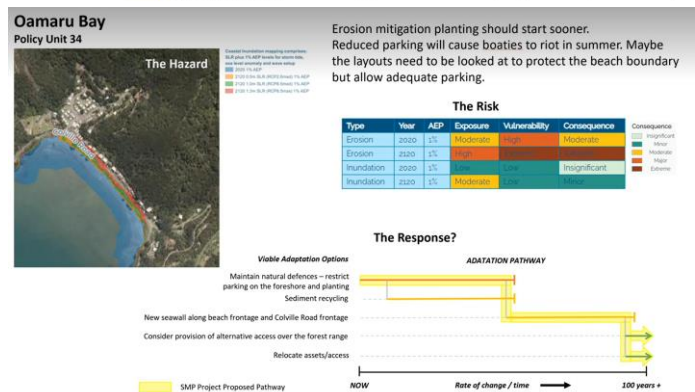
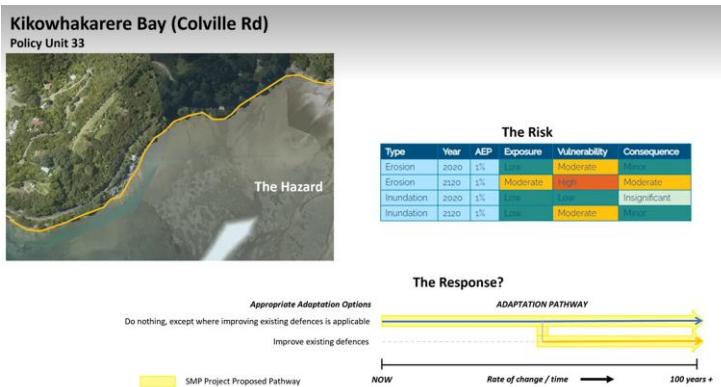
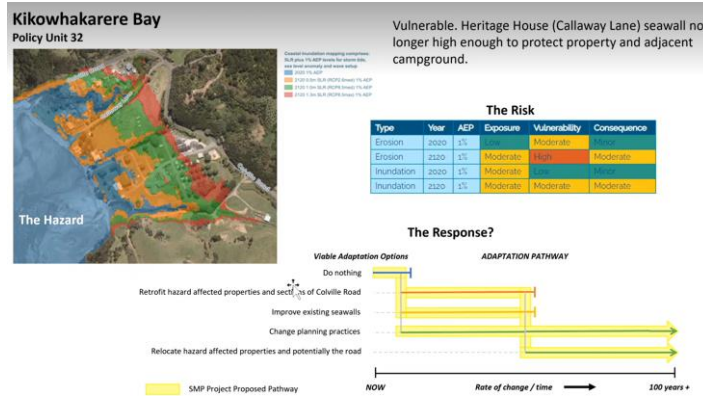


Main issue here is the access to the area  
Will add foot note that PU 29 needs to be looked at in conjunction with this area

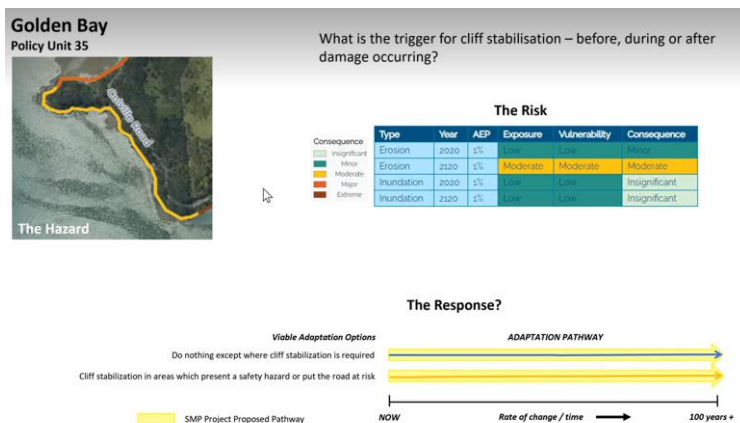


Comment of not discussing Long Bay or Tucks Bay. Erosion now at Long Bay with some protection already in place. Risk table risk is not quite right for this area. JA – future development of outdoor facility at Tucks Bay (low lying in areas) Need to add a foot note regarding erosion in this area (long Bay)

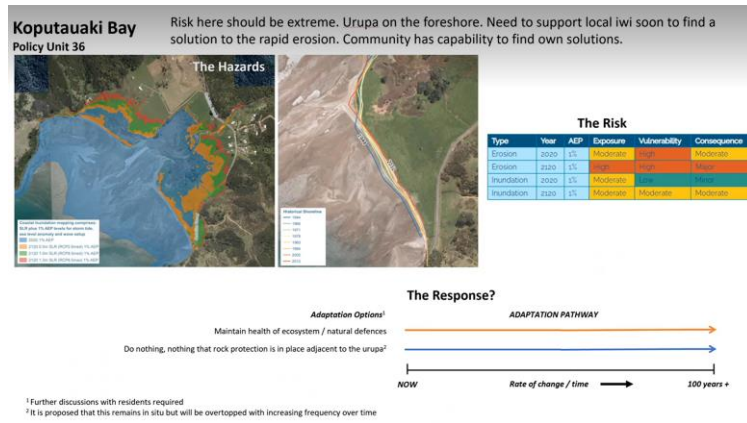




Long term consideration an alternative road. Maybe change wording surrounding not parking on the foreshore. Manage rather than restrict. Formalised areas for parking.



Transport issue where cliff stabilisation needs to occur – part has been done. May need a Groyne at Colville end of Oamaru Bay?



## Urupa

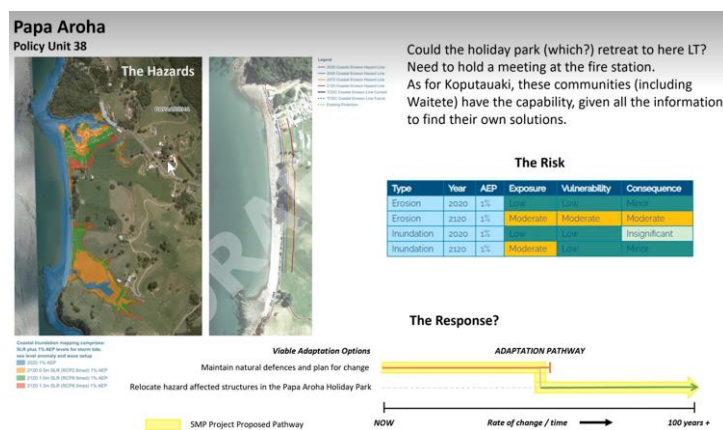
Shoreline has receded in the last 40-50 years leaving the area extremely vulnerable. Sea wall and groynes already in place



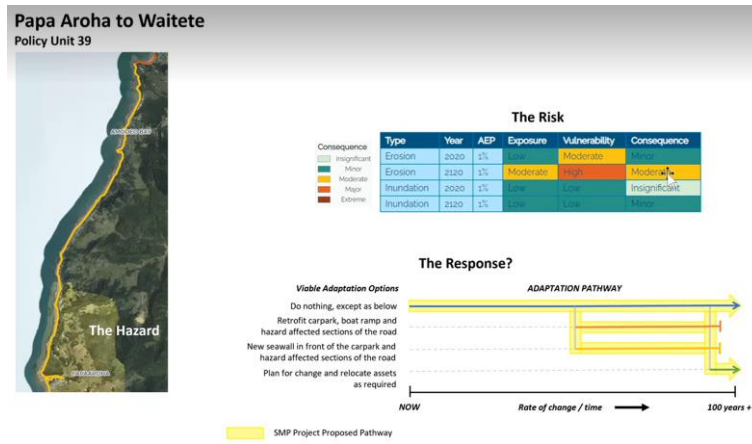
Top 2 groynes doing some work, but area is also susceptible to inundation. Shoreline retreat can be addressed in the short term, but at some point this area will have increased inundation from both tides, sea level rise and storm events.

AM -Have we advocated enough for the road? JA – doesn't foresee short term issue that makes the road high risk. The foreshore is the high risk area.

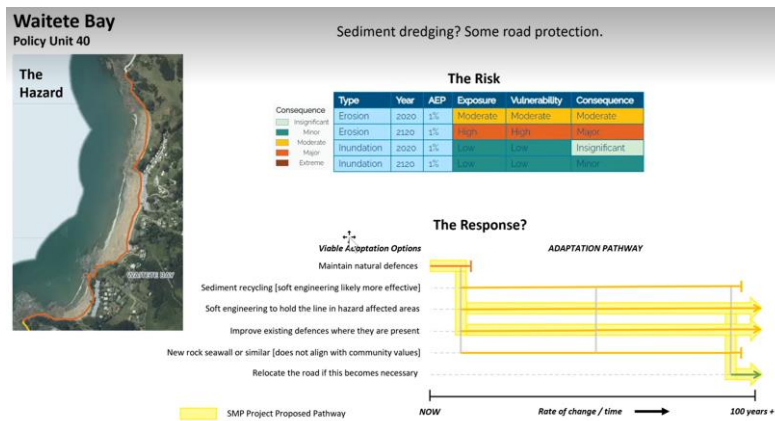
SJ – we have not put a 'preferred' pathway as need the community to have more input into this. Add - raise and maintain road



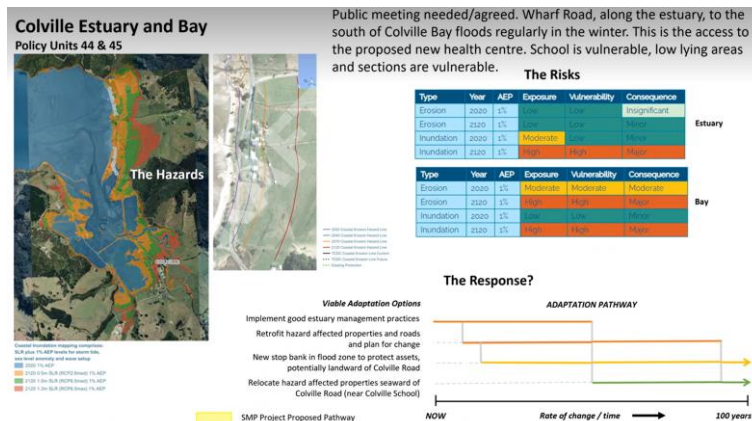
May need to look at moving some structures in the holiday park medium/long term



Should we have new sea wall or retrofit – agreement on retrofit



Road is vulnerable. JA – small part still is, but most has been dealt with so residents are ok. Culvert issue has been resolved. DJ – would be best person to comment on this.



Have not put in a preferred/proposed pathway so that community can have more input. Two different areas so could be different perspectives.

c. Draft Concept Designs. (NL presentation)

hypothetical look at protection for 100 years' time – show what protection could look like, and if it is an option to be considered.

King tides are a regular issue into the future, with Sea Level rise they become the same as a storm event JA – we haven't talked about the area northern end wharf road that is very low lying.

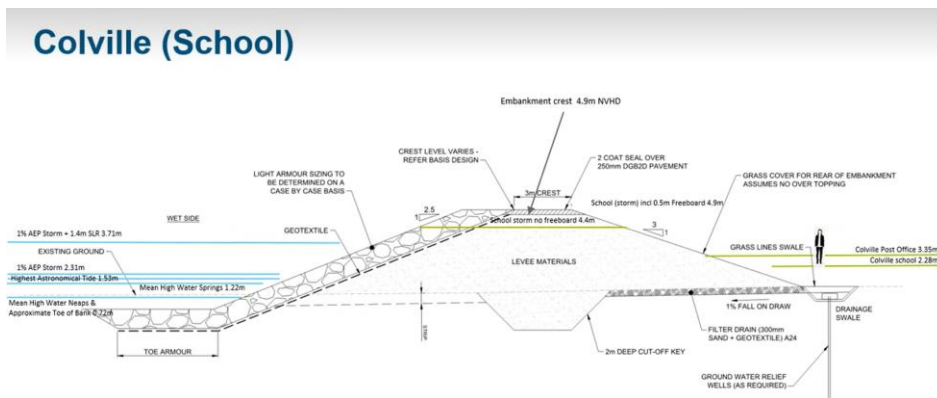
NL (Didn't see presented slides) can probably get away with large grassed stop banks. Some of the elevations needed for protection in the future – the road will also need to be raised.  
 Two treatments – stop bank around the back and protective structure around the front to protect from ocean forces



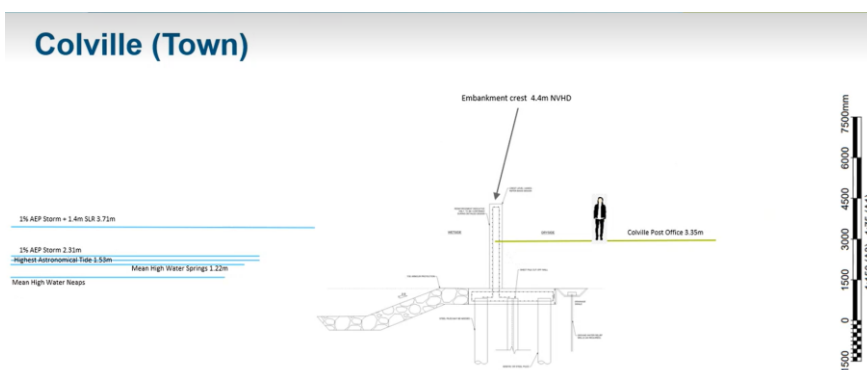
(concept designs which can be tweaked)

Multiple factors – rising sea, storms, wave penetration, fluvial flooding in the valley

Cross section to scale – right side ocean elevations, left side town elevations



Road would need to go up over or through where it intersects (options for flood gates etc)



Could move the creek and use a stop bank instead rather than a vertical wall due to space constraints

Calculations have been done for ocean inundation – so keep in mind they may need to go up if river flooding is greater.

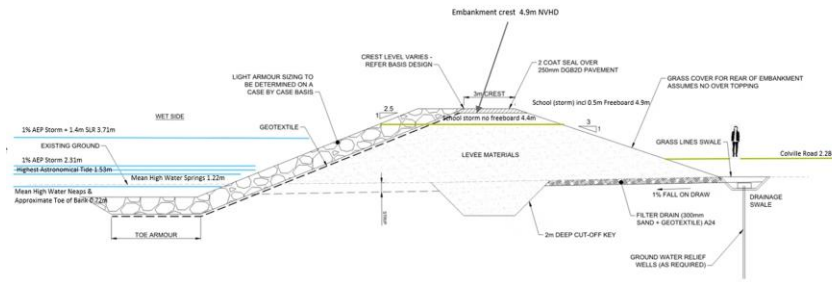
JA - Would stop bank already there for river protection do some of the job? NL – yes, but needs to have more structure built on top

Sheet piling is also an option – but likely to be more expensive and not as pleasant aesthetically.

Seaward side to protect road and houses:



## Colville (North)



Embankment receives the storms and greater impact of waves so is higher due to the amount of run up that can happen. If you lower – waves will over-top the structure.

Example of what it would look like (from Moanataiari)



Any overland flow/streams need to exit – so would need some form of pumping and stormwater management

Some challenging aspects with the roads/embankments etc plus the costs could be high.

What is cost vs relocation?

AM – around 8 locations around the district going through a similar exercise. Thames has had a cost analysis done (cost vs relocation).

Concept design information is not ready for the wider community yet.

Need to have some information e.g. heights of protection needed in areas so they can start to consider some of the options and the challenges.

AM – governance meeting in 2 weeks' time. They will give approval on what they want shown to the community – so seek guidance from them if some of the concept info will be taken through to the public consultation.

NL – how would it be presented? To public who have not had the background that the panels have had, so they can understand the concepts.

SJ – show a cross section and a planned view – explain that it is an option and needs to be costed out. Will put 2 alternative routes on the posters (as done for Whitianga).

NL – present as a hypothetical scenario – what it looks like to protect Colville.

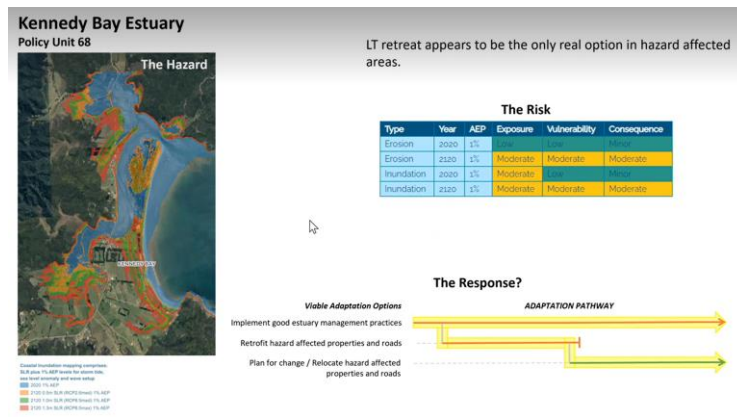
10 more policy units to go – not a lot of comments came in from homework on most of these

JA – note about Port Jackson Rd

PU 60 – JA comments have been captured in the response

PU 63 – DOC adaptation plan (national level) – look at that

PU 64 (Little Bay) Beach front properties are up on the hill, not at sea level



Have gone to the marae and talked about the risk in this area, but not yet the response?

SP – erosion protection should be added (inside the split)

SJ – soft engineering can be added to this as an option and add avoid inappropriate development

AM – update with options and send to Stephanie for further comment (PU 68 & 69)

5. Time allowing, discussion on thresholds and triggers (topic for Meeting 9).

6. Preparation for Community Consultation.

Western side days/times changed and are now:

Thames	Friday 27 <sup>th</sup> 5pm – 7pm
Te Puru	Saturday 30 <sup>th</sup> 9.30am – 12.30pm
Coromandel	Saturday 30 <sup>th</sup> 1pm – 3pm
Colville	Sunday 31 <sup>st</sup> 10am – 12.30pm

AM – how we need to explain things well – so the community can understand

How do we incorporate the feedback we receive on the day?

Will give a presentation – where we are now / how we got there etc – then break out so they can look at the posters relevant to them and get feedback. Sticky notes etc Need to work out how to capture the feedback.

Encourage public to go to the meetings

Some of this information will be new, scary, controversial. Recommends council members need to be involved.

Is there going to be a link to a section on the Council website with information (on the posters) Council could create a virtual lobby and get links to information on the project, and perhaps the facility to ask questions. One drop-in session will not be enough. People will need a lot more information.

Some areas may need more public engagement – Kennedy Bay should be included in this.

7. Next Meeting 12<sup>th</sup> November and Meeting Closed 12.35pm

## Meeting Papers

- I. Agenda
- II. Third Pass Risk Assessment. Now uploaded into shared folder
- III. Example 'Poster' for community consultation.

## Presentation materials

- I. Policy Unit Risk Assessment Mapping Folium.
- II. Draft Adaptation Pathways (provided to Coastal Panel members following the presentations at the end of August/early September).
- III. Draft Concept Designs for discussion.

### Actions Table – SMP 8

No.	Action	Responsible	Status
9	Timeline of storm events for the East coast sought.	JB/WRC	Information on historical analysis now with JB. WRC has not assessed the May 2021 storm but TCDC has gathered information on it
13	Awareness of the SMP Project to be raised with the Regional Transport Committee	Project Office	In progress - presentation proposed for Oct 2021.
16	Iwi representation to be discussed at the SMP Governance Meeting in March 2021	Project Office	Completed. Coastal Panel chairs to attend next SMP Governance meeting on 26 <sup>th</sup> August 2021.
17	Catchment Management Plans to be considered by Coastal Panel	Project Office/AM	Link to already published info: <a href="https://www.waikatoregion.govt.nz/council/policy-and-plans/hazard-and-catchment-management/hcmp/">https://www.waikatoregion.govt.nz/council/policy-and-plans/hazard-and-catchment-management/hcmp/</a> Also in the shared drive
23	KM to share TAG meeting presentation for Thames Coastal Panel.		Thames Only - completed
24	add in 'cultural' to driver list for 'triggers'	Project Office	Requested by MB Panel - completed
25	Work out best dates for public consultation in October	Project Team	Completed
26	Include short descriptions on options column for ease of reference	Project Office	To be completed for future presentations
27	Provide Messaging bullet points for all panel members to take back to their community	Project Office/AM	In Progress
28	WRC mapping for contaminated sites around the peninsula including Buffalo Beach, that could be used to inform the risk assessment	WRC/Project Office	To do – data requested from WRC
29	GO to speak with AM regarding iwi participation & have a coffee with Joe Davis to see if there is a way of approaching the iwi engagement.	GO/AM	
30	Provide maps for areas of cultural significance	Project Office	
31	Definition posters for the open days (icons included?)	Project Office	
32	Include on posters if the solution is for erosion or inundation	Project Office	

33	Communications Plan	AM/CB	
34	Kuaotunu West – re-work on the presentation/posters and send back out to the group before printing. Also add to next TAG meeting for discussion	Project Office/SJ  AM	
35	Reassess PU 118 (south East) – look at King Tide data and access issues	Project Office	
36	Change public consultations days and times for Western side of coromandel peninsula	AM/KMM	
37	Update (PU 68 & 69) with options and send to Stephanie for further comment	Project Office	