



## **SMP Coastal Panel Meeting 7**

Times & Dates: **Coromandel to Kennedy Bay 9:00am-12:00pm Friday  
30/07/21**

Venues: **Coromandel Council Office Board Room or via MS Teams**

Chairperson: **Jan Autumn (Coromandel)**

Attendees: TCDC – Amon Martin,  
SMP Consultant (Royal HaskoningDHV) – Sian John, Nick  
Lewis (via MS Teams)  
Coastal Panel Members: David Currie, Kate James, Jan  
Autumn  
Tony Fox (via MS Teams)

Apologies: Jamie Boyle, Michael Donoghue, Neville Cameron, Nicole  
Ward, Dean Jenkins, Karen Moffatt-McLeod

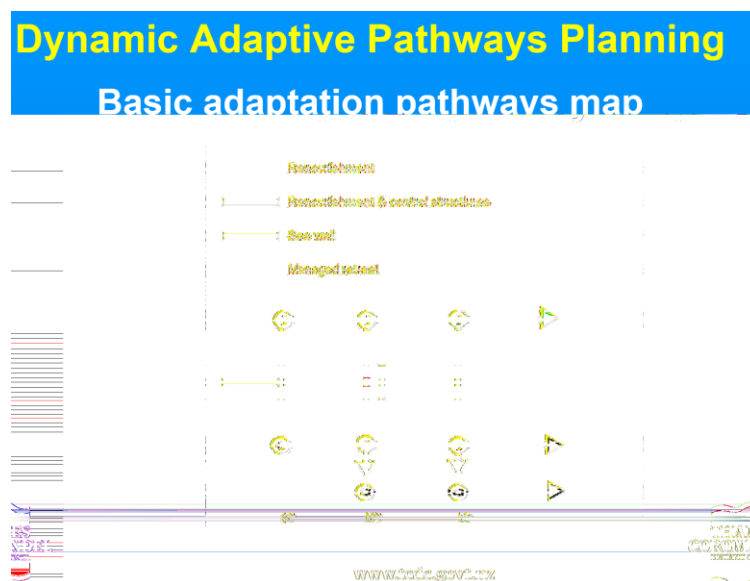
### **Meeting Objective**

- To understand the additional work being undertaken, how this work will feed into the DAPP processes, how the approach helps manage uncertainty, and to evaluate viable options

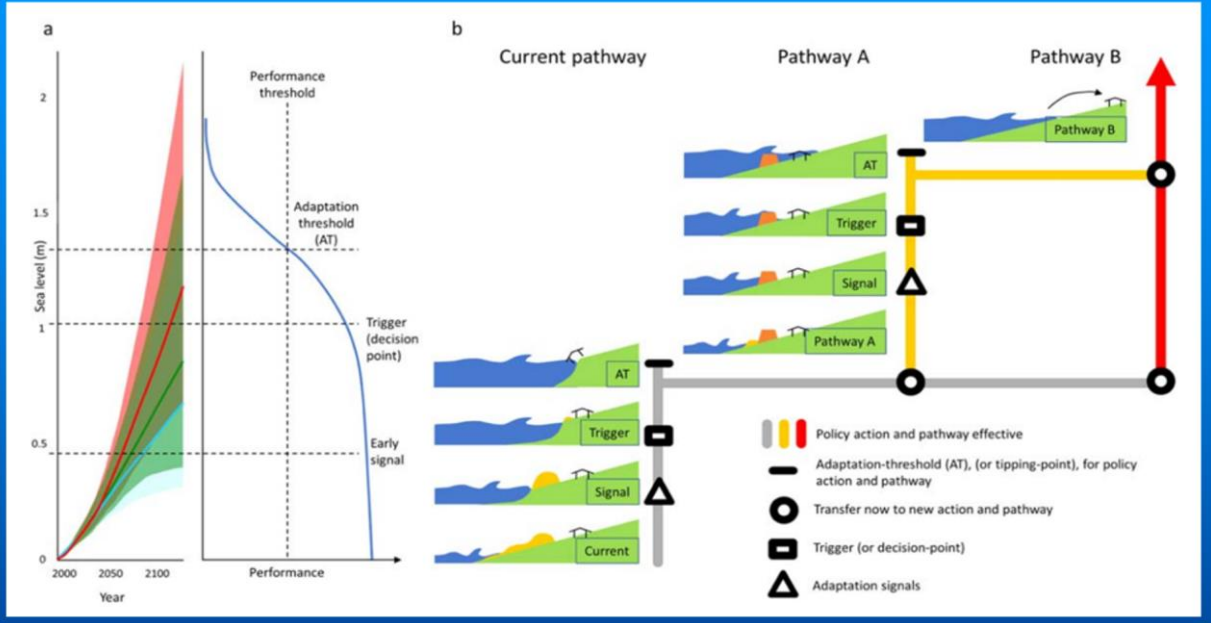
### **Agenda Items**

1. Welcome and introduction to the session
  2. Review of May meeting
    - a. Minutes – all agreed minutes are accepted – moved from the chair. No items arising from minutes.
    - b. Actions
- Item 9 – still waiting from WRC for timeline of historical storm events. This is being worked on,
  - Items 11 & 12 complete

- Item 13 – in progress – took the need to do an update/presentation back to the governance committee and was decided that it should wait until end of calendar year or early 2022. Tony Fox is representative on that committee. TF stated in yesterday’s meeting – this process is well articulated at the RTA meeting. Roding and resilience top of the list. Not an overnight fix, however. Tony will re-raise issues at next Monday’s meeting. Hope to present in the October meeting. Tony will raise at meeting next week.
  - 14 & 15 completed
  - Items 16 – AM meeting in Thames (meeting was postponed due to illness and will be rescheduled) – Ngāti Maru Ngāti Tamaterā and will explore how they want to be involved. AM believes they may have specific issues and interests they may wish to discuss separate to the Panel.
  - Item 17 – WRC have some catchment management plans published – but not Whitianga MB area – timeline is Dec 2021 for these. DA will summarise for next meeting. Link to already published info:
  - <https://www.waikatoregion.govt.nz/council/policy-and-plans/hazard-and-catchment-management/hcmp/> (added to shared file)
  - Items 18 – 20 relate to the Coromandel panel and completed. NL has reviewed methodology for west coast, to ensure it is the most accurate e.g. beach, foreshore, road. New lines will take account of refinements.
  - Remove 21 as it is the same as 17
  - Item 22 – completed with ‘avoid’ added to option
3. Refresh on the DAPP process



# Signals to Triggers Action

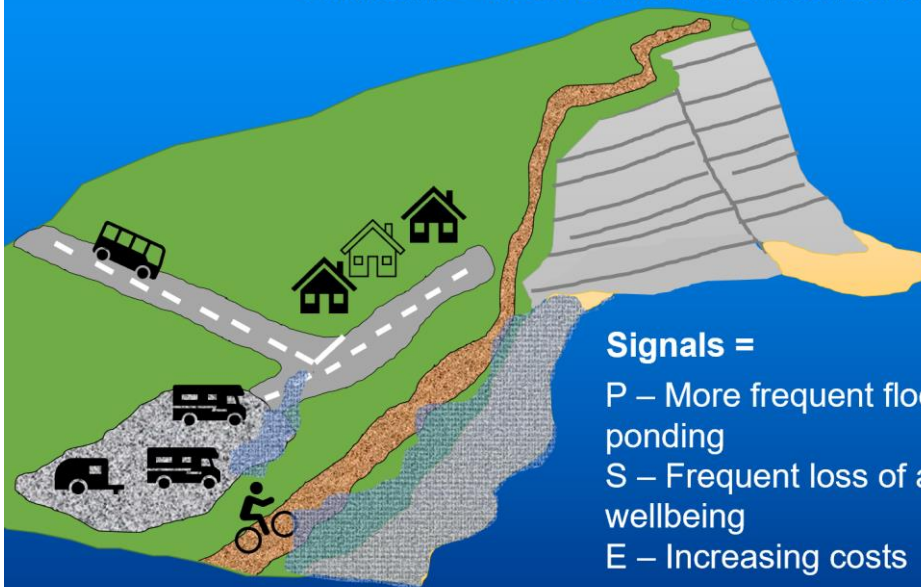


Signals to trigger action slide – shows risk profile and performance of actions that could be taken. Early signals and triggers included. General pathway – do nothing, then options for action options.

By the next meeting panels need to start thinking about ‘action threshold’ at which point is it unacceptable.

**Example** Adaptation threshold = loss of beach access and recreation reserve (30m)

**Triggers =**  
 Physical – flooded 60% of the time  
 Social – limited access, documented effect on wellbeing  
 Economic – costs of restoration/maintenance prohibitive



**Signals =**  
 P – More frequent flooding/erosion, ponding  
 S – Frequent loss of access, effect on wellbeing  
 E – Increasing costs

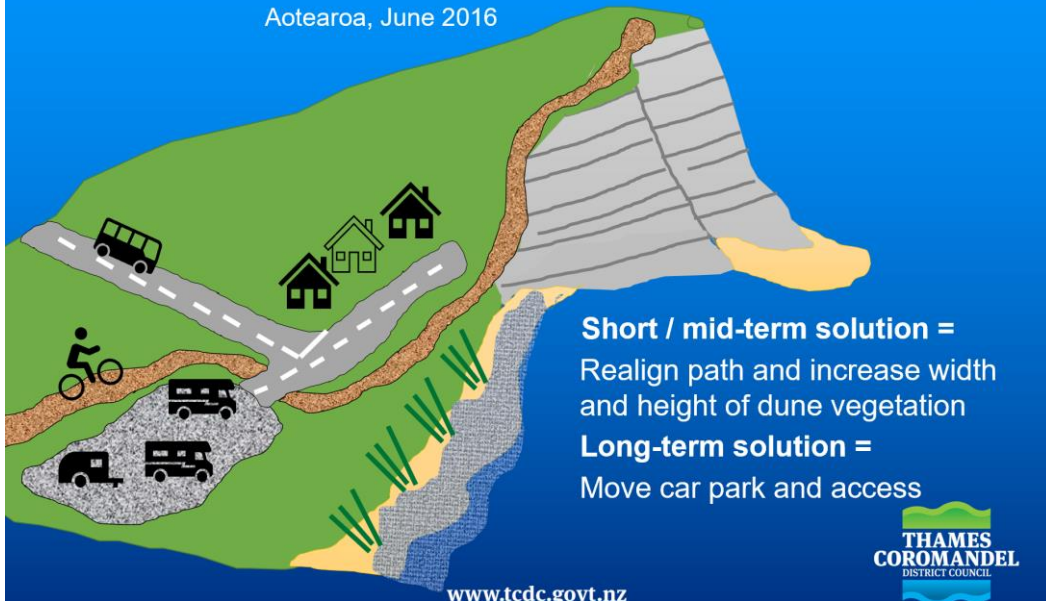
[www.tcdc.govt.nz](http://www.tcdc.govt.nz)



Example slide above of what could happen

## Example

"A key challenge remains to assist engineers, planners and communities to understand that successful adaptation is not just a process of picking a single number, selecting a single option for action and thus 'solving' the issue". Coastal adaptation to climate change in Aotearoa, June 2016

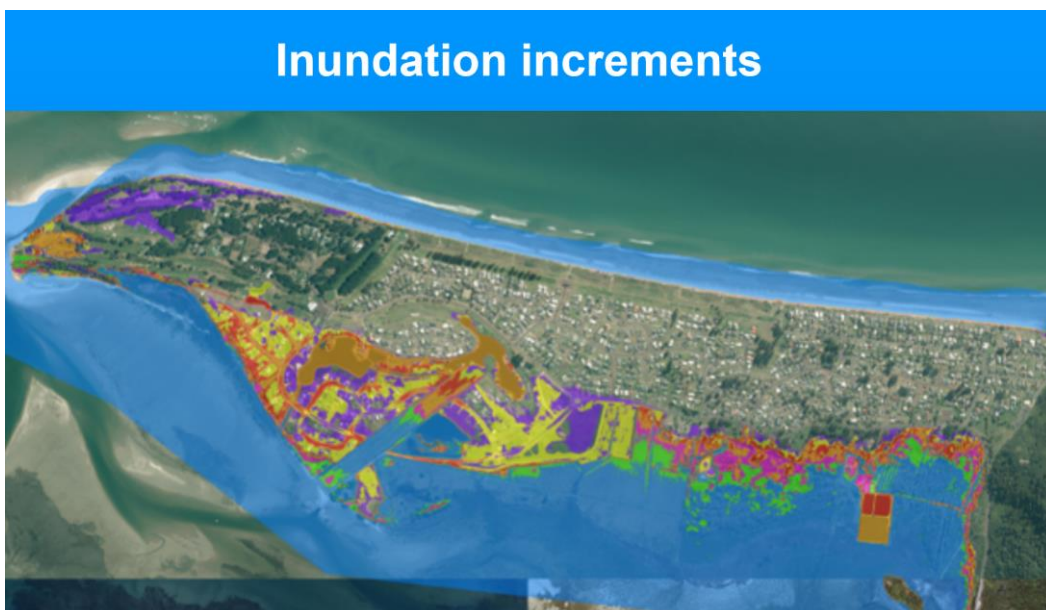


Slide example above on short – long term actions taken. Signals and triggers are very important.

Define clearly the 'if' it happens or 'when' it happens particularly for the public consultation.

### 3. Further inundation hazard modelling outputs – illustration and update

Information from Nick on 100-year scenario – lots of events are happening in the lead up to that 100 year point that will have a contributing effect. We are looking at everything leading up to that 100-year point. As well as modelling sea-level rise, subsidence, storm events, king tides etc have also been mapped. Past data on storm analysis has been used and have predicted changes moving forward.



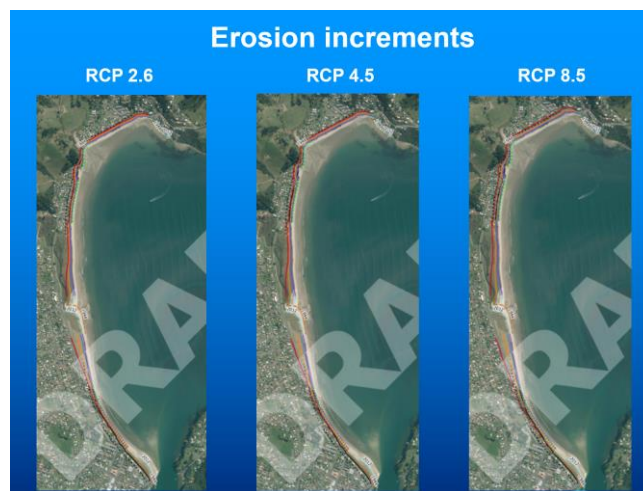
Inundation increment slide example - Matarangi:

Now in 20cm increments as requested. Available on an interactive tool which enables you to turn layers off and on. From this you can derive frequency probability of events e.g., 1 in 100-year event, becoming 1 in 20-year event. This information will add another level of detail to help determine signals & triggers.



Using 100-year events is the brief given, that is why they have been used. TCDC are allowing other timeline to be included in the scenario's.

Buffalo Beach (example) further erosion modelling outputs – illustration and update



Erosion increments slides: Different sea-level rise scenario's: RCP 2.5, 4.5, 8.5 med & 8.5 plus for some of the high-risk beaches. Will be provided online once they are all completed. Info will be tabulated (as requested) on the increments. 8.5 is 100 years under 3–4-degree sea warming. This information will help determine what the triggers are.

#### 4. Evaluation of viable options

PU22 (Manaia Harbour) - tricky area as it has river as well as coastal flooding. Keep options

Short term - maintain eco system, raise the road – but heading towards retreat/protect in long term on the smaller areas that need it. Only one house along the straight (not permitted).

PU26 (Te Kouma to Preece Point) - there are a variety of areas within the PU with different needs. Keep existing options. Only have 4 for short time and 8 & 10a for medium term – this might be needed sooner on the stretch of road by the mangroves. Long term option maybe to join the state highway to the other road (particularly for an emergency).

PU26 – Keep existing options

PU28 (Coromandel – Tiki Rd) - Keep existing options

PU29 (Coromandel – Wharf Rd) – How often is it tolerable for the road to be closed in the community's view? Road services Wyuna Bay & Long Bay access. Likely that McGregor's Wetland area will naturally change its form overtime with sea level rise. Currently on private land, but if it moves back who own's it then? Keep existing options.

PU30 (Wyuna Bay) – existing wall being undermined. Option 8 is only for small section. Keep existing options.

PU31 (Wyuna Bay – Kikowhakaere) – Keep existing options and add option 4 for Tucks Bay.

PU32 (Kikowhakarere) – Keep existing options.

PU33 (Kiowhakarere / Colville Rd) - Keep existing options. NIA

PU34 (Oamaru Bay) – Keep existing options. Need to talk to Iwi as all Maori land and Maori lease Matu whetiri? Nicholls family & Williams family– JA has contacts.

Significant erosion issue. Can't raise the road due to properties behind. Sea Wall might hold it, but long-term option may be to retreat. Long term the road may need to be re-routed as it is access to Colville. May be 'paper' road up over the hill behind.

PU35 (Golden Bay) – Keep existing option – but also maybe able to do dune stabilisation as it is reserve land.

PU36 (Koputauaki Bay) – keep one existing option. Families trying to build and maintain a seawall. Consult with local community regarding Urupa. Nicholls family, Williams family and Henere family – JA has contacts.

PU38 (Papa Aroha) Keep existing options. Retreat has to do with the holiday park as it is re-locatable. Could have a targeted meeting for this site and surrounding area – JA Fire Station would be a good place to hold the meetings. JA is on the committee.

2018 flood – chalets flooded, has happened previously as well. NW/high tide will lead to flooding.

PU39 (Amodeo Bay) Option 5 – retro fit relates to the carpark area around the boat ramp which is eroding. Option 10a – seawall only small piece around the carpark is the only area to protect small stretch of road by the bridge. Locals currently shore up during working bees. Do we need to include 3a NIA? Do we need to be broken out so it is a smaller unit as Amodeo Bay is a very small part, rest is Papa Aroha. NL can either split or have the PU and add a note within that on the particular area of issue.

PU40 (Waitete) – Keep existing options

PU44 (Colville Bay Estuary) – for 7 PU's in the area there will be extra scoping at a higher level being completed to see what the best options from an engineering point of view are. This is one of those areas. Will show what it will take physically and cost wise to protect or mitigate the hazards up to 100 years' time. Keep existing options – add Option 4 as well. Biggest issues up around the school area and wetlands. School could be relocated across the road.

PU45 (Colville Bay) – Keep existing options. PU44 & PU45 could be combined.

PU47 (Whangaahei Bay – Collville Rd) – Keep existing options. Folium will be updated with new aerial photography for some areas.

PU49 (Whangaahei Bay – Port Jackson Rd) – Keep existing options.

PU50 (Whangaahei – Otautu Bay) keep existing options

PU51 (Otautu Bay) – Keep existing options and add Option 4. Urupa and heritage site (old wharf).

PU53 (Waiaro Bay) retreat relates to Port Jackson Rd and associated buildings. Is retreat option needed? Keep existing options.

PU54 ( - Keep existing options.

PU59 (Sandy Bay) – Keep existing options and add Option 4 in Short – Medium Term

PU60 (Port Charles) – includes Little Sandy Bay – no issues. Kerry Rd issues – only have raising road or relocate as can't defend. Keep existing options.

PU63 (Waikawau Bay) – keep existing options or change to NIA – 3a

PU68 (Kennedy Bay Estuary) – keep existing options. AM – is there a catchment management plan for Kennedy Bay? NL have a piece of work to look more at Kennedy Bay due to fluvial and river issues as well.

PU69 (Kennedy Bay Beach) Keep existing options.

**Targeted consultation areas: Kennedy Bay, Oamaru Bay, Koputauaki Bay) – JA will provide contacts. Papa Aroha based meeting to include Waitete Bay, Amodeo Bay.**

Three Locations with Iwi interests which need specific meetings and one at Papa Aroha should be Iwi and Community meeting combined. Urupa at Koputauaki Bay needs specific meeting too.

#### 5. Proposals for wider community sessions in September 2021

Indications were that these would occur in the spring, so could be end of sept or October. October is the better options to allow time for two more meetings before the public consultations and for the work to be completed. Good to have targeted meetings prior to the public consultation. Probably 2<sup>nd</sup> week of October during school holidays.

Action: Team will work out best time and inform Costal Panel members

We need to ensure that the public feels they are involved in the process and have a voice.

6. Next steps, reflections and close

## Next Steps

- **Input of finer resolution data / frequency data**
- **Development of concept designs**
- **Selection of triggers and thresholds** ⇒ August 2021
- **Proposed pathways** ⇒ **Open Days** ⇒ September 2021

**Note Open Days now October.**

Next meeting Thursday 26<sup>th</sup> August with extra time allowed if needed and an extra meeting to be held in September prior to public consultations. Governance Meeting that afternoon starting 2pm, so need to finish by 12 o'clock

Summary of panels work for meetings with Iwi. Chairs of Panels could come to next Governance meeting to have that dialogue with Iwi representatives.

JA thinks this has been a fantastic process and have covered a lot. We are now somewhere we can move forward from.

TF – thinks having an extra meeting prior to community consultation is a good idea. Would inviting chairs of respected rate payer group to these meetings as observers? AM thinks this is a good idea for next round of meetings, also targeted invitations to them for public meetings. Also, time needs to be put aside for re-visiting the LTP.

Meeting closed 11.25am

### Meeting Papers

- I. Agenda
- II. Minutes if May Meeting including updated action list.
- III. Option Evaluation Report



## Actions Table

No.	Action	Responsible	Status
9	Timeline of storm events for the East coast sought.	JB/WRC	Outstanding- still in progress WRC will do analysis of May 2021 storm.
13	Awareness of the SMP Project to be raised with the Regional Transport Committee (meetings generally quarterly)	Project Office	In progress - presentation proposed for Oct 2021.
16	Iwi representation to be discussed at the SMP Governance Meeting in March 2021	Project Office	Completed. Coastal Panel chairs to attend next SMP Governance meeting.
17	Catchment Management Plans to be considered by Coastal Panel	Project Office/AM	Link to be provided – project team/Dene
18	Neville – road at Waitete Bay should not be 'moderate' (2020) risk is higher now. Refer to 2018 event which has been the most significant.	Project Office	Coromandel Specific - completed
19	B05 Koputauaki Bay Further consultation required due to complexities of the situation.	Project Office	Coromandel Specific - completed
20	C01 Papa Aroha – check inundation on this model	Project Office	Coromandel Specific - completed
23	KM to share TAG meeting presentation for Thames Coastal Panel.		Thames Only - completed
24	add in 'cultural' to driver list for 'triggers'	Project Office	Requested by MB Panel - completed
25	Work out best dates for public consultation in October	Project Team	Completed
26	Include short descriptions on Pre lim option column for ease of reference	Project Office	To be completed for future presentations