

ELEV 19

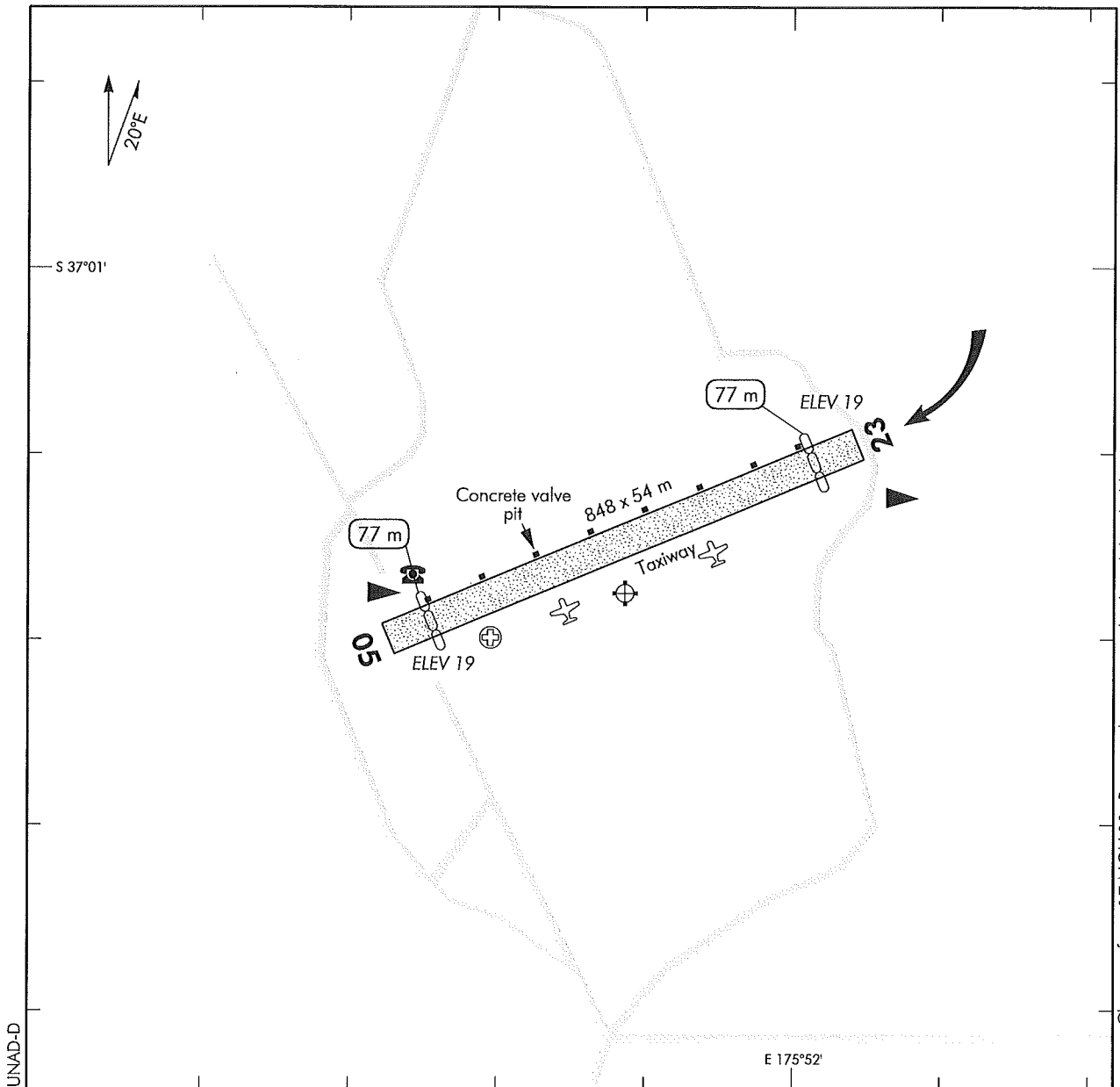
NZUN

NON-CERTIFICATED

PAUANUI BEACH**AERODROME (1)**

UNATTENDED: 124.5

AWIB: 130.6



1. Grass on sand base erodes in dry weather. Where possible, pilots should keep to grassy areas. Full strip width available.
2. Circuit: RWY 05 — Left hand RWY 23 — Right hand
3. Park nose in and as close to south boundary as possible to avoid side clearance infringement.
4. Noise abatement — due to the proximity of residents, aircraft movements should be avoided before 0730 LMT.
5. AWIB 130.6 MHz, activated by 4 transmissions.
6. **CAUTION:**
 - Moderate to severe turbulence and windshear can be expected in S, SE and NW winds.
 - Model aircraft flying may take place at any time, often in the evenings.
 - While pedestrian traffic is prohibited on the airfield, people often ignore the warnings. Pedestrians and dogs may cross or stray onto the airfield at any time, especially during the evening.
 - Vehicles may be on the airfield at various times carrying out routine inspections and grass mowing.

(continued)

S 37 01 18 E 175 51 49*

Effective: 4 APR 13

© Civil Aviation Authority

**PAUANUI BEACH
AERODROME (1)**

PAUANUI BEACH
AERODROME (2)

- North edge of the runway strip has a line of eight concrete valve pits 1.5 m in diameter protruding 200 mm above the surface. The runway strip edge is 6 m from the fenceline to avoid the valve pits.
- Aerobatics are often conducted between Shoe Island and Slipper Island.

Effective: 19 SEP 13

Non-Certificated Aerodrome 1 NM SE of Tairua

**PAUANUI BEACH
OPERATIONAL DATA**

NZUN

RWY

RWY	SFC	Strength	Gp	Slope	ASDA	Take-off distance			LDG DIST
						1:20	1:30	1:40	
05 23	Gr	ESWL* 1140	6	Nil	848	771			771

*ESWL restricted to 910kg in wet conditions.

LIGHTING

Nil

FACILITIES

Flight office and vehicle car parking located on the southern side of the airfield at 9 Harvard Court, Pauanui. For access to the flight office please contact the Operator on Tel (07) 868 0200.

SUPPLEMENTARY

Operator: Thames-Coromandel District Council
Tel (07) 868 0200
Email lorna.price@tcdc.govt.nz
Web www.tcdc.govt.nz

D Pauanui Beach aerodrome is available for general use without the permission of the operator.

Landing fees:

Private aircraft

Per day \$10.00
Per annum \$100.00

Commercial aircraft

One landing \$20.00
Two landings \$40.00
Per day \$50.00
Per annum \$900.00

Payment options for landing fees:

- (a) An honesty box is available at the airfield flight office for cash/cheque payments
- (b) By cheque to: Thames-Coromandel District Council, Private Bag, Thames

Invoicing/administration fee \$25.00 per invoice.

The aerodrome is fully irrigated with subsurface drip lines. Aircraft screw/anchor tie-downs can only be used in designated areas.

Effective: 17 SEP 15

ELEV 19

CAT H

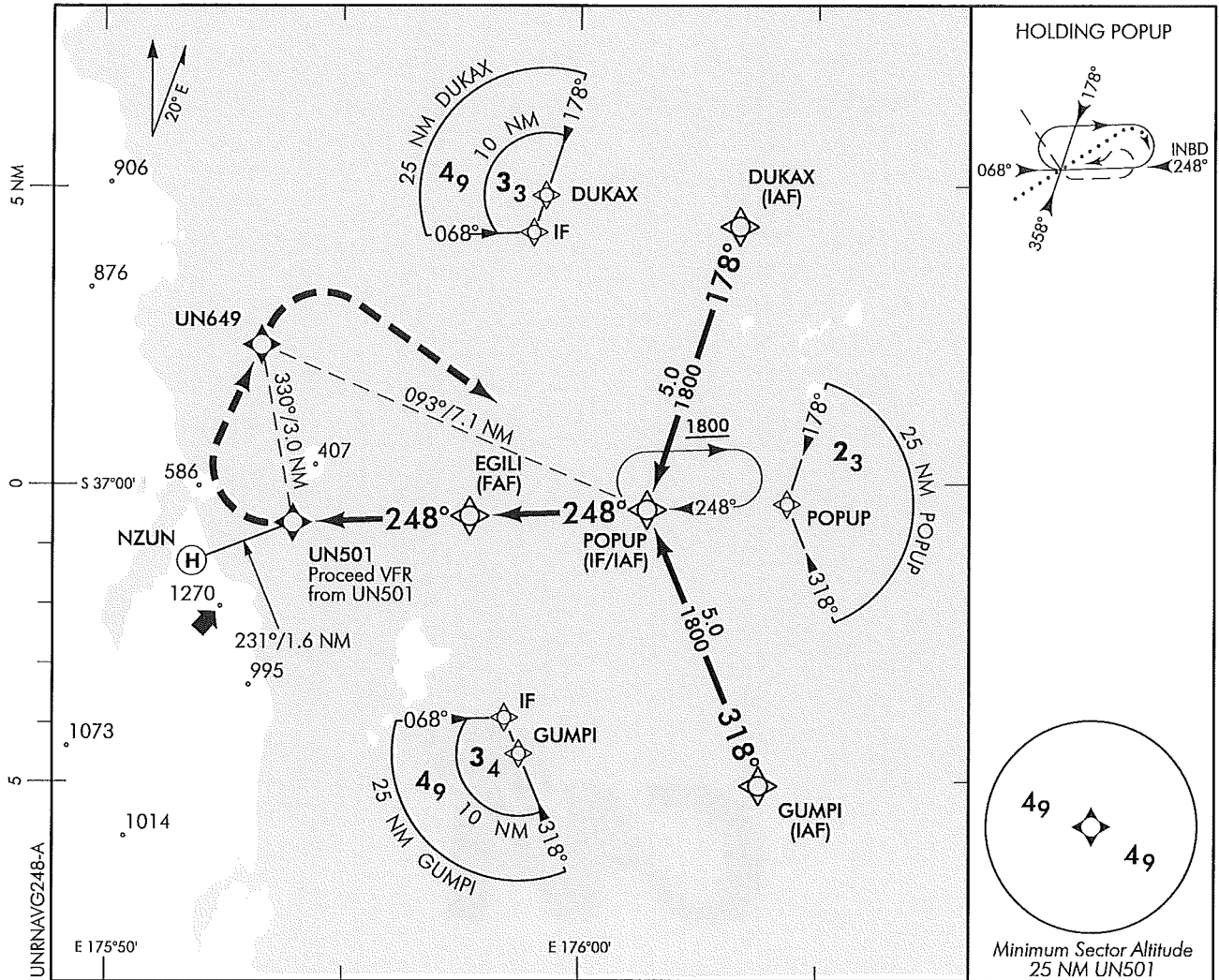
PAUANUI BEACH

NZUN

RNAV (GNSS) 248

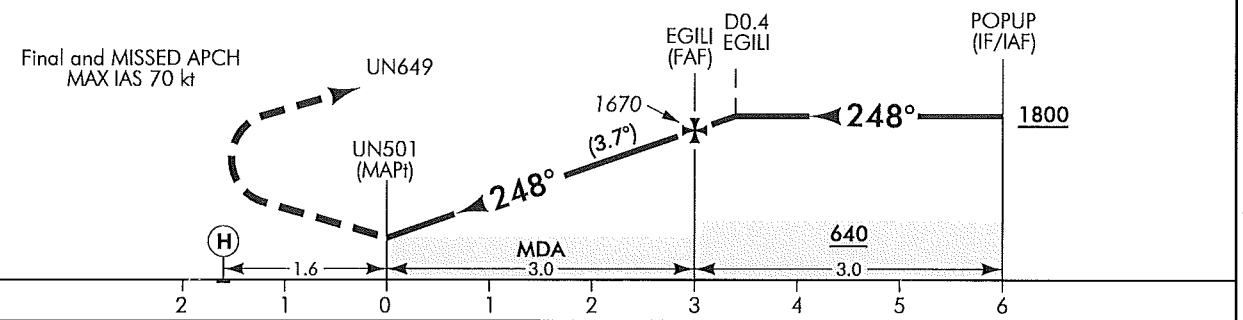
UNATTENDED: 124.5

AWIB: 130.6



Use Pauanui QNH

Final and MISSED APCH
MAX IAS 70 kt



MISSED APCH: Turn RIGHT direct to UN649 (fly-over), turn RIGHT direct to POPUP 1800

DISTANCE to WPT	UN501	1	2	EGILI	1	2	POPUP
Advisory Altitude 6.5%	MDA	870	1260	1670	2050	2450	2840
Category	H						
LNAV	470(451) – 3100						

Effective: 26 MAY 16