

Health Risk Assessment and Remedial Options

Moanataiari Governance Group
5 December 2012



Key Questions

1. What is the level of risk?
2. What should be done about it?



What is the level of risk?

Eight blocks:

- Blocks 5 and 6, no additional risk
- Block 7 additional risk is 0.00032%
- Block 8 additional risk is 0.00082%
- Block 4 additional risk is 0.00116%
- Block 1 additional risk is 0.00208%
- Block 3 additional risk is 0.00252%
- Block 2 additional risk is 0.00398%

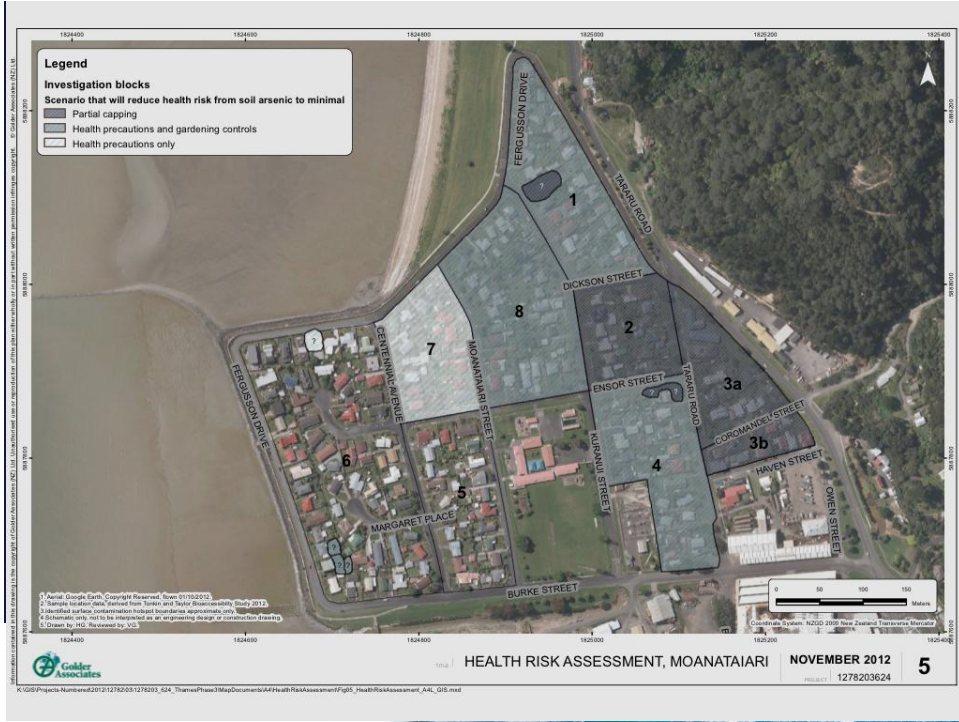


What should be done about it?

Implement responses that:

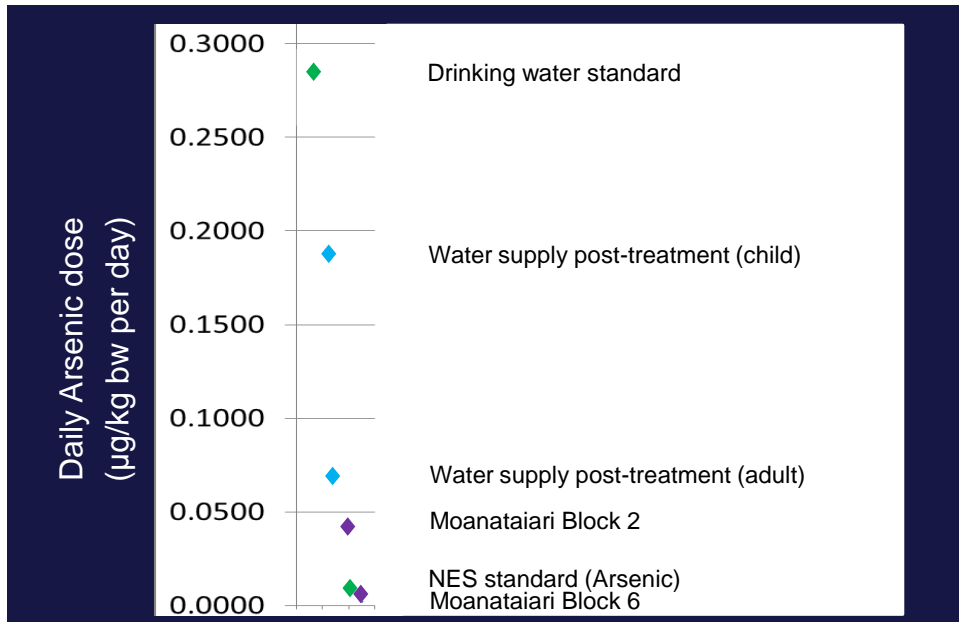
- Are commensurate with potential risk within blocks
- Do not potentially increase risk or create additional risk





Finding perspective





Summary

TCDC staff:

- Favour response options that do not include dig-and-dump remediation
- Prefer a partnership approach towards managing risk through advice and assistance programmes (including gardening advice) involving the MfE, WRC, MoH, WDHB and the Thames-Coromandel District Council

