



APPENDIX H

X-ray powder diffraction spectra



APPENDIX H

X-ray Powder Diffraction Spectra

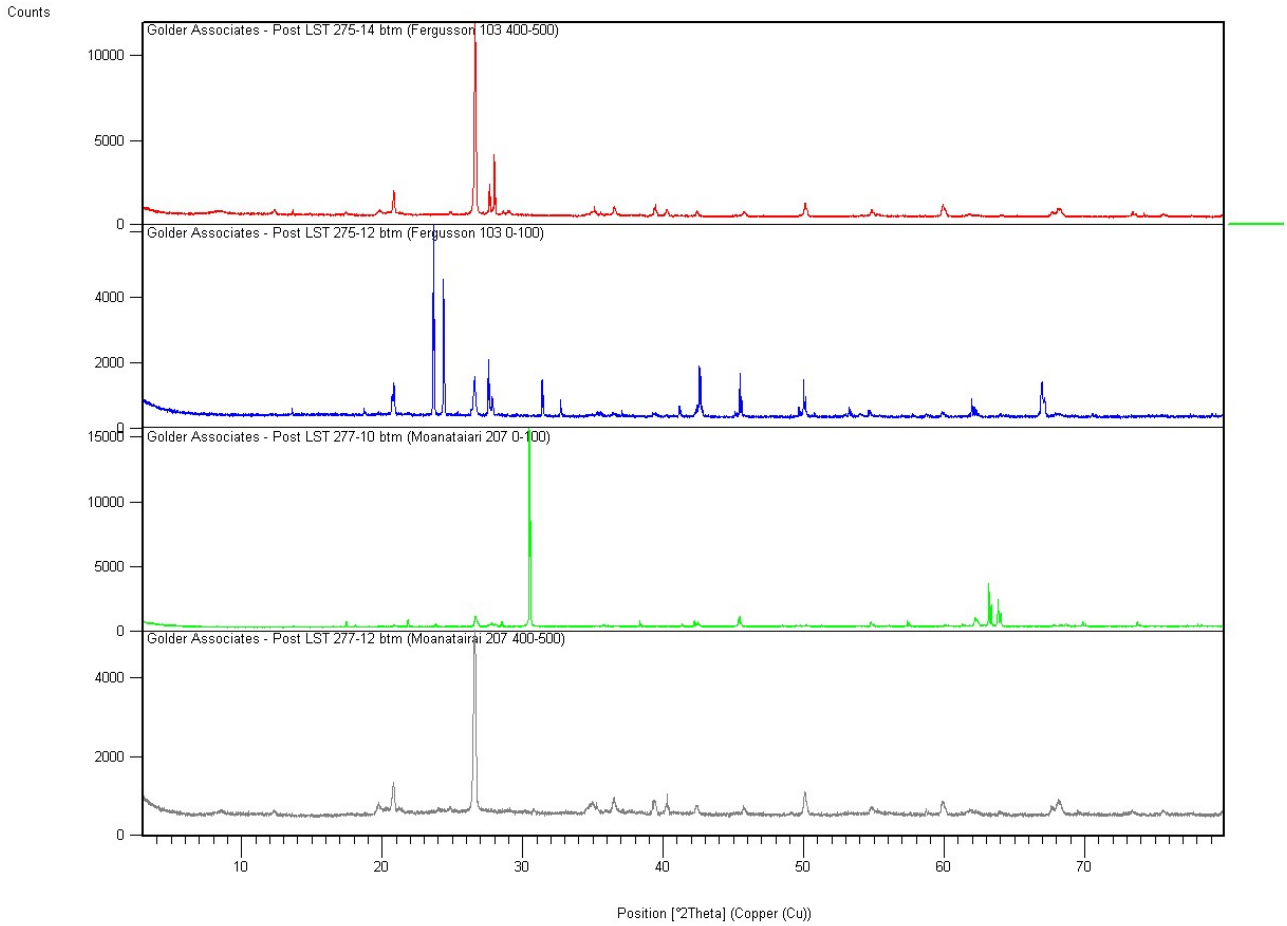


Figure H1: Combined.



APPENDIX H X-ray Powder Diffraction Spectra

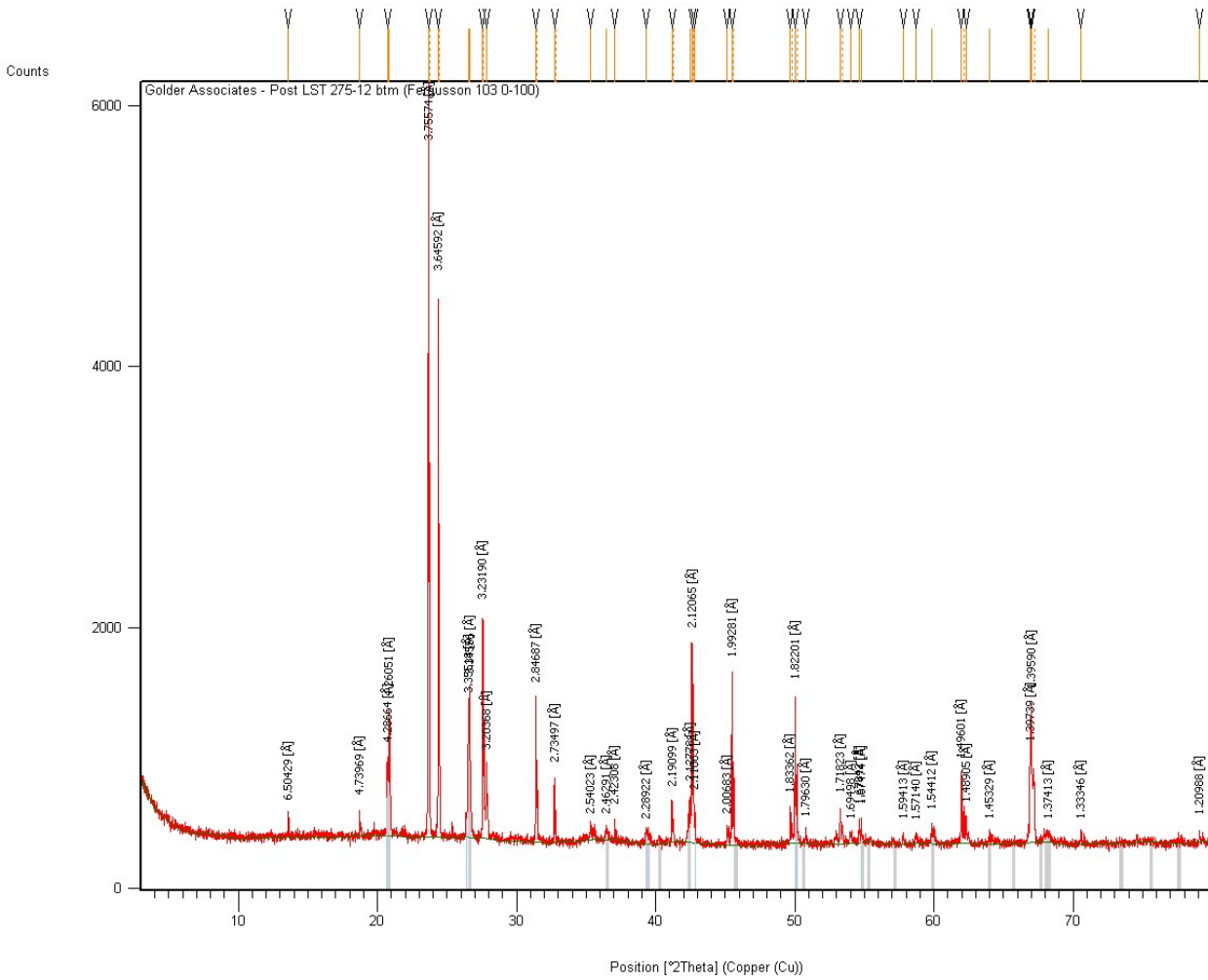


Figure H2: Golder – Post LST 275-12 btm (Ferguson 103 0-100) 2d values.



APPENDIX H X-ray Powder Diffraction Spectra

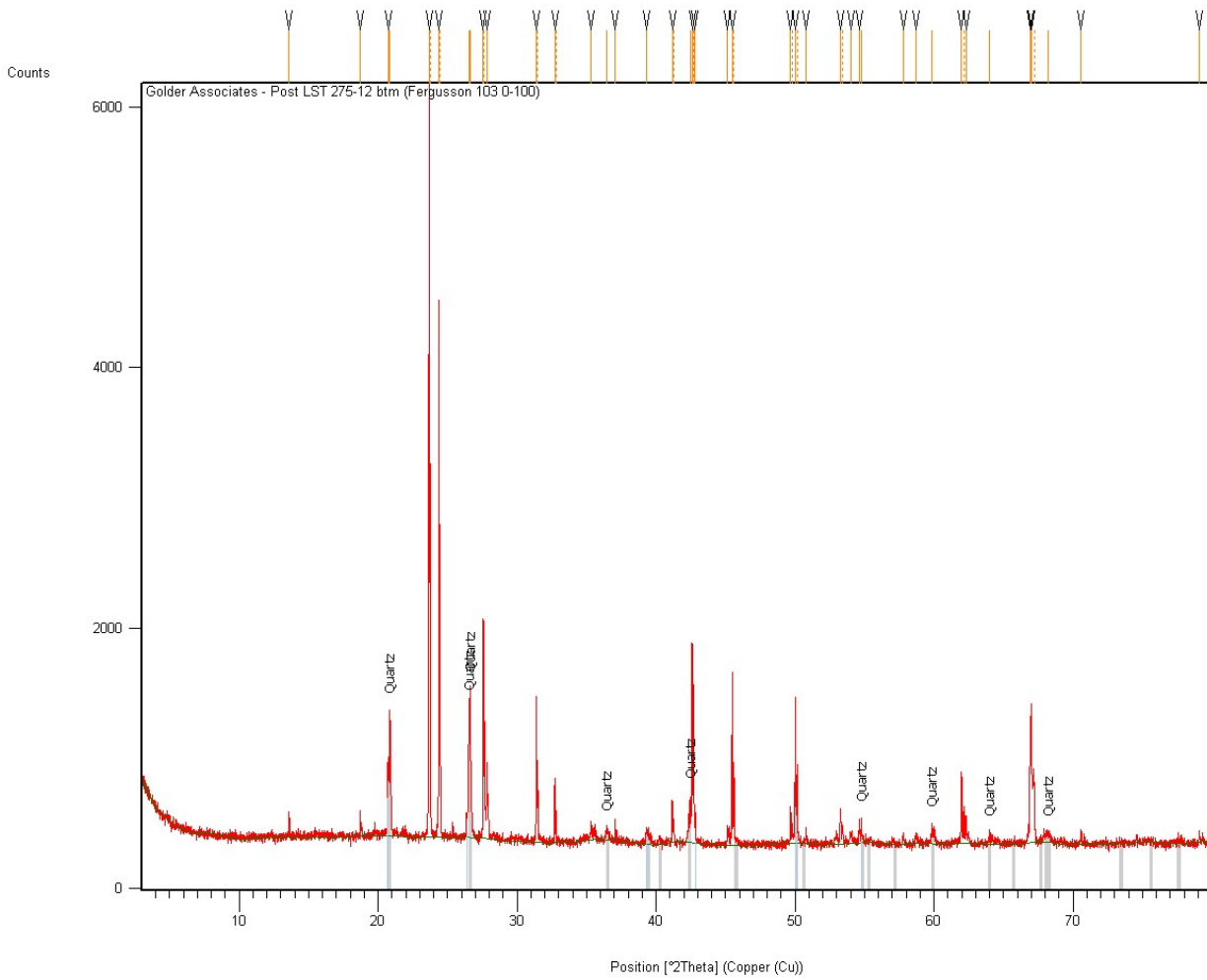


Figure H3: Golder – Post LST 275-12 btm (Fergusson 103 0-100).



APPENDIX H

X-ray Powder Diffraction Spectra

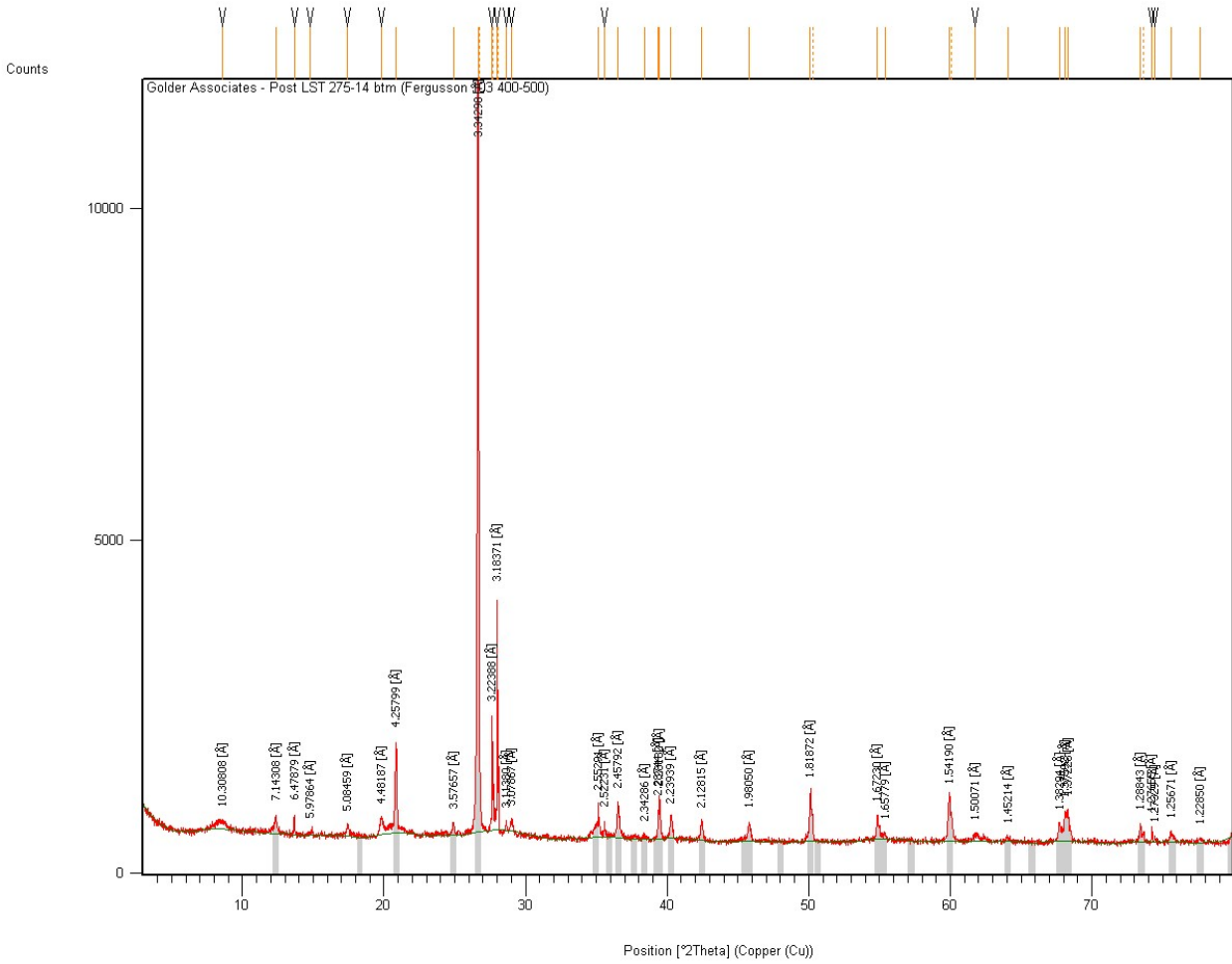


Figure H4: Golder – Post LST 275-14 btm (Fergusson 103 400-500) 2d values.



APPENDIX H

X-ray Powder Diffraction Spectra

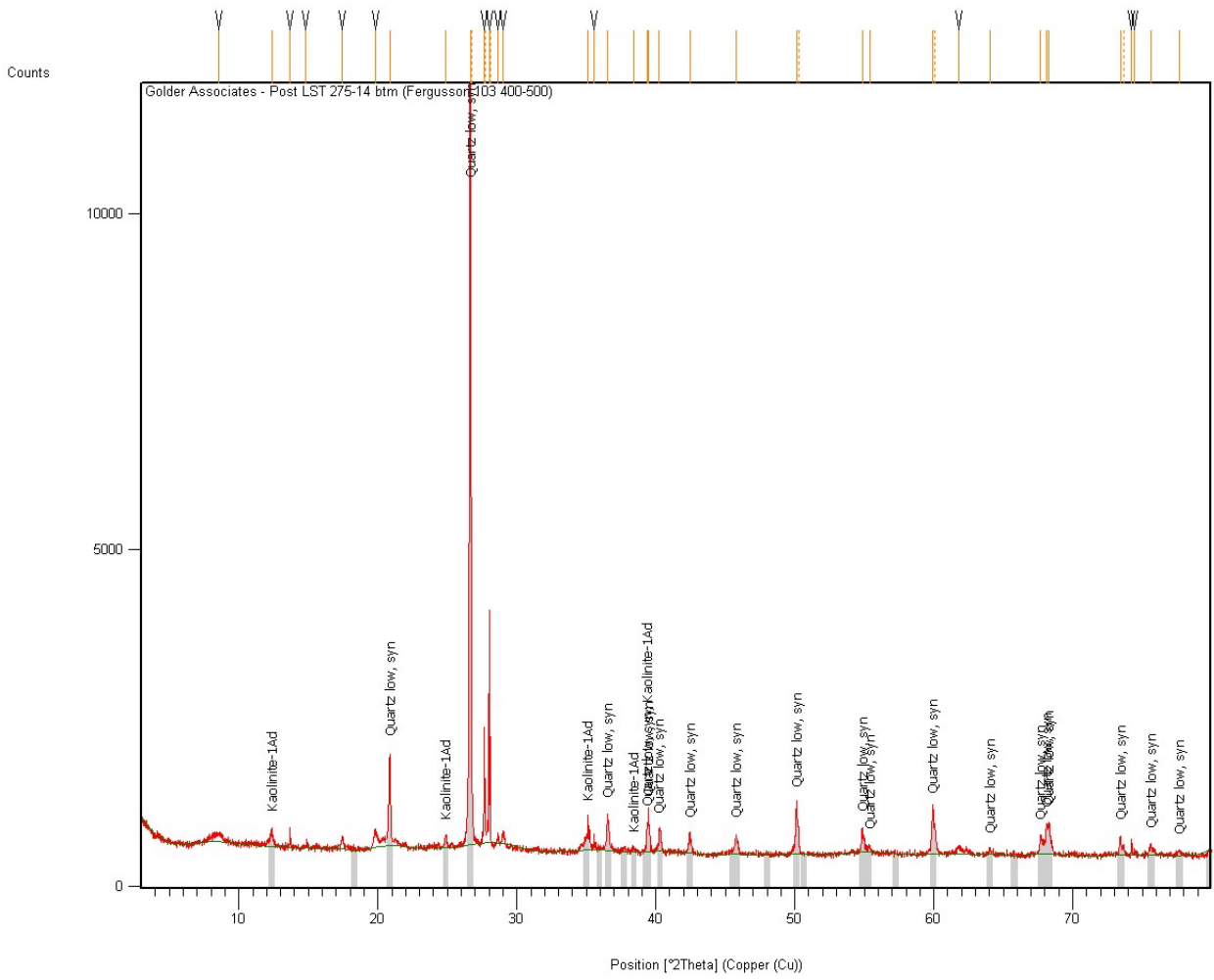


Figure H5: Golder – Post LST 275-14 btm (Fergusson 103 400-500).



APPENDIX H X-ray Powder Diffraction Spectra

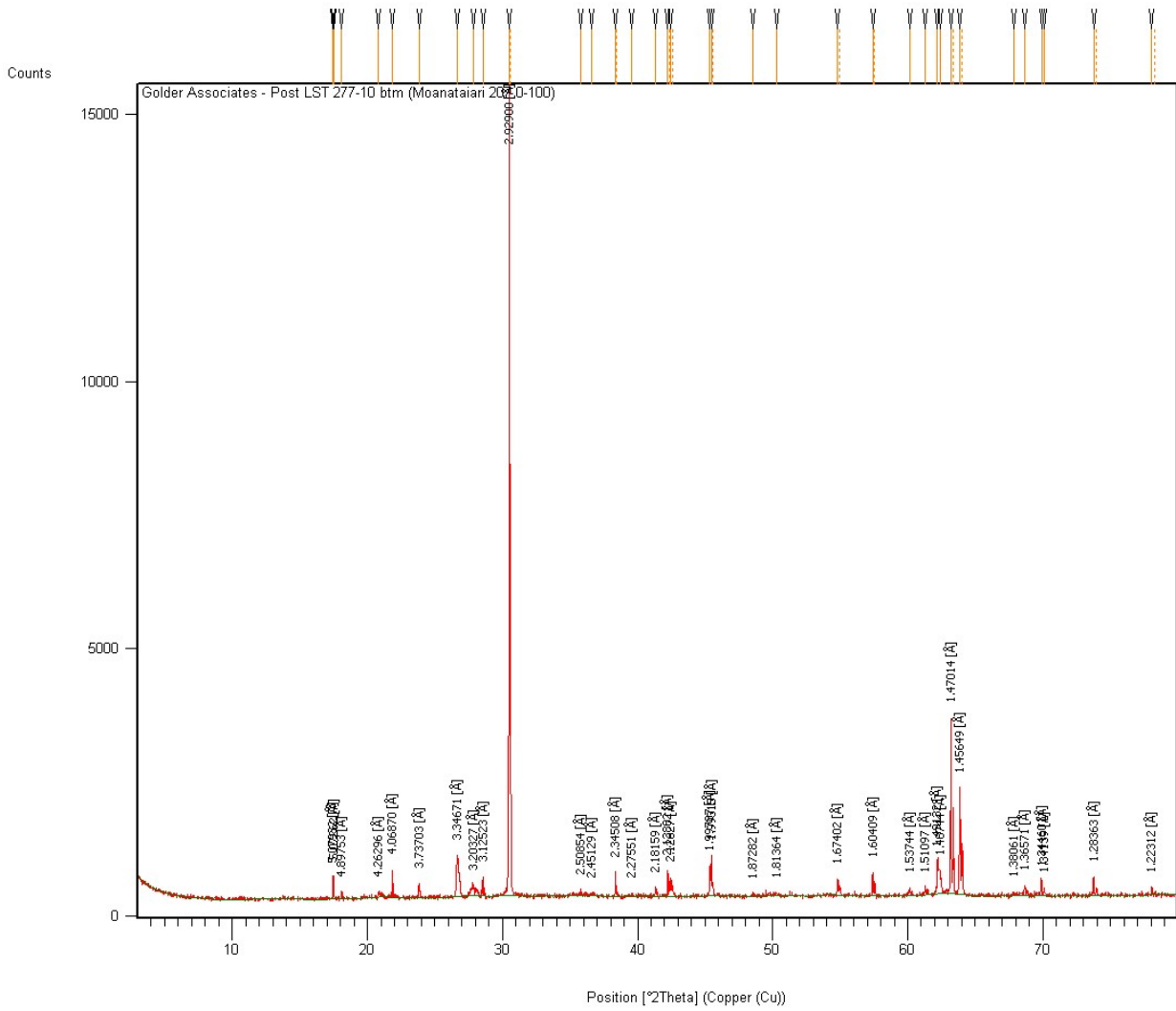


Figure H6: Golder – Post LST 277-10 btm (Moanataiari 207 0-100) 2d values.



APPENDIX H X-ray Powder Diffraction Spectra

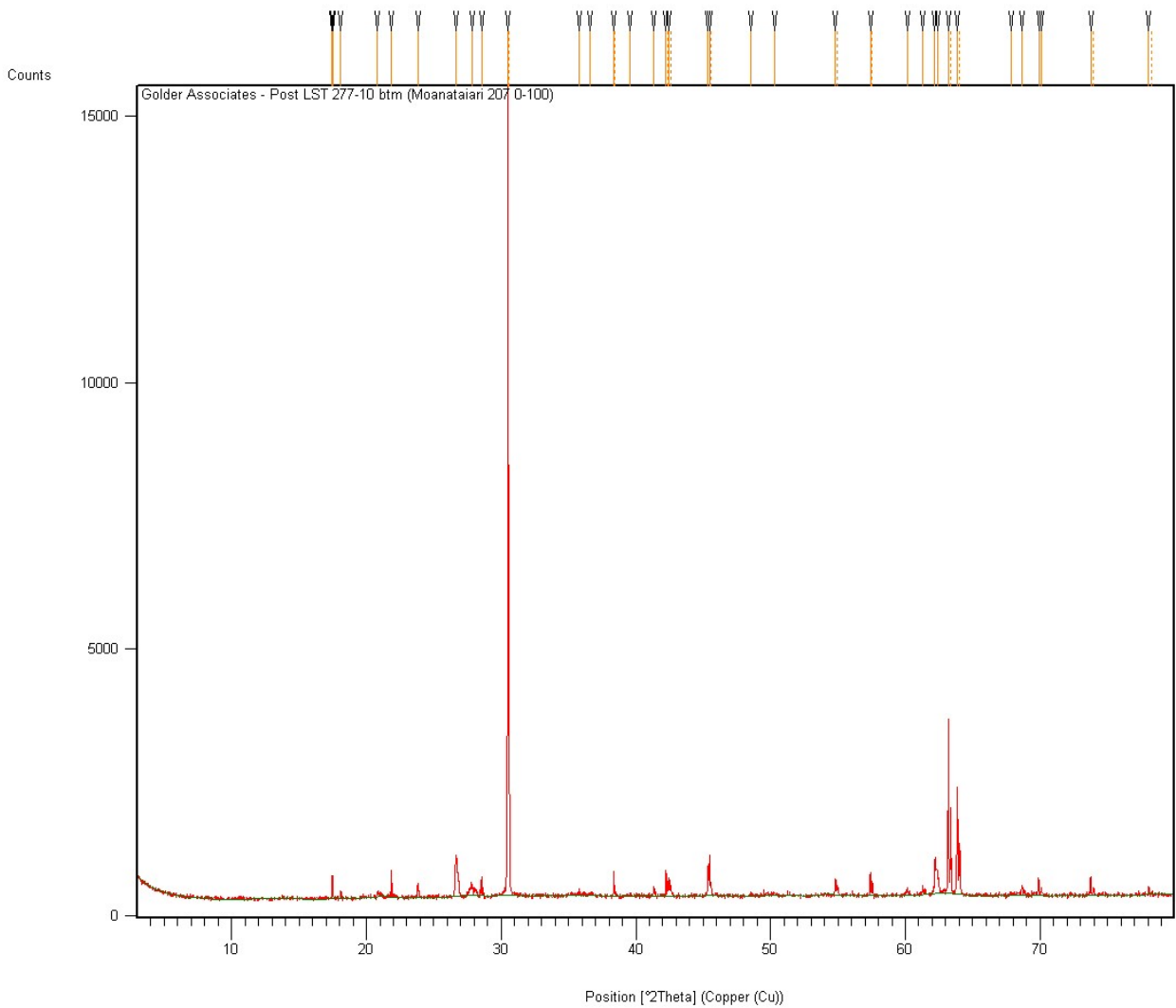


Figure H7: Golder – Post LST 277-10 btm (Moanataiari 207 0-100).



APPENDIX H

X-ray Powder Diffraction Spectra

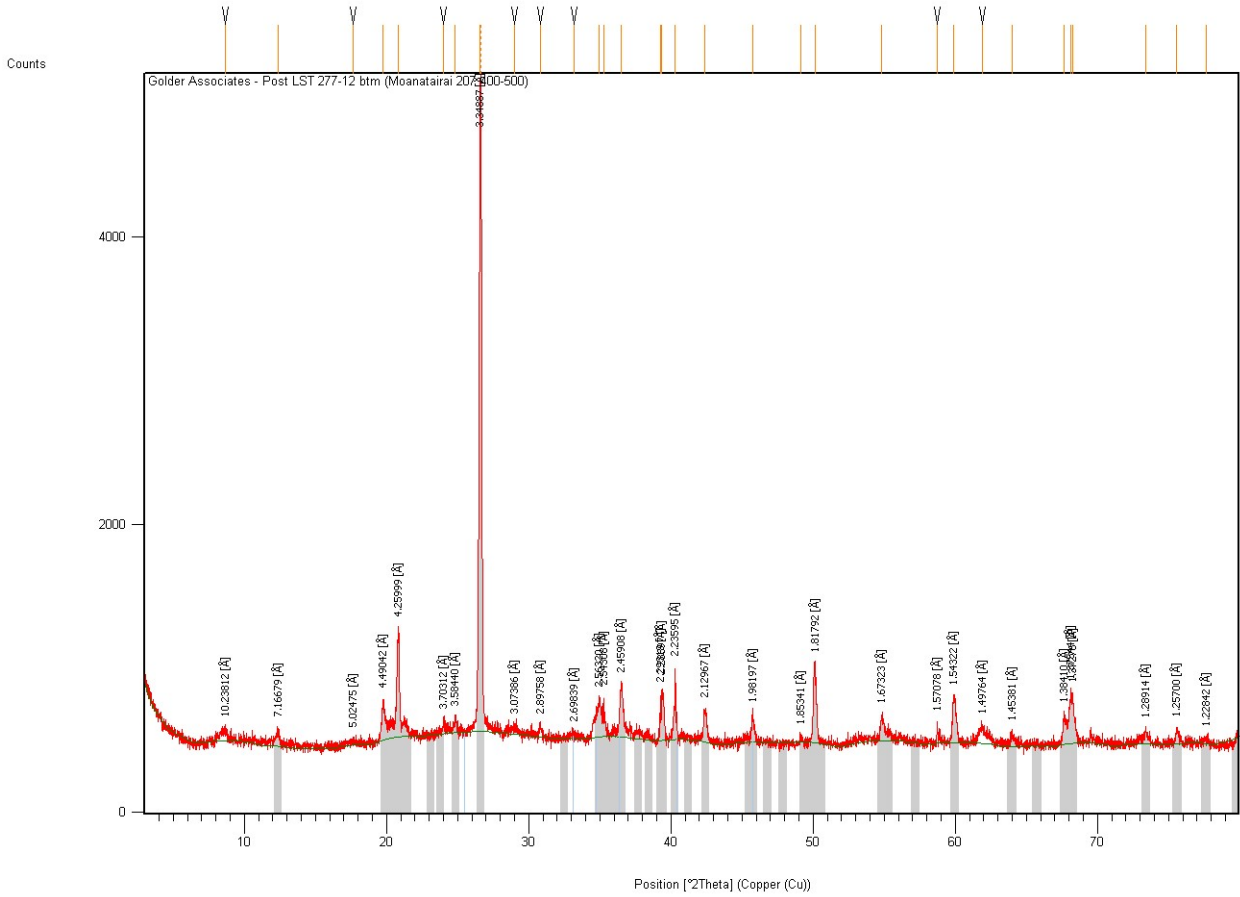


Figure H8: Golder – Post LST 277-12 btm (Moanatairai 207 400-500) 2d values.



APPENDIX H

X-ray Powder Diffraction Spectra

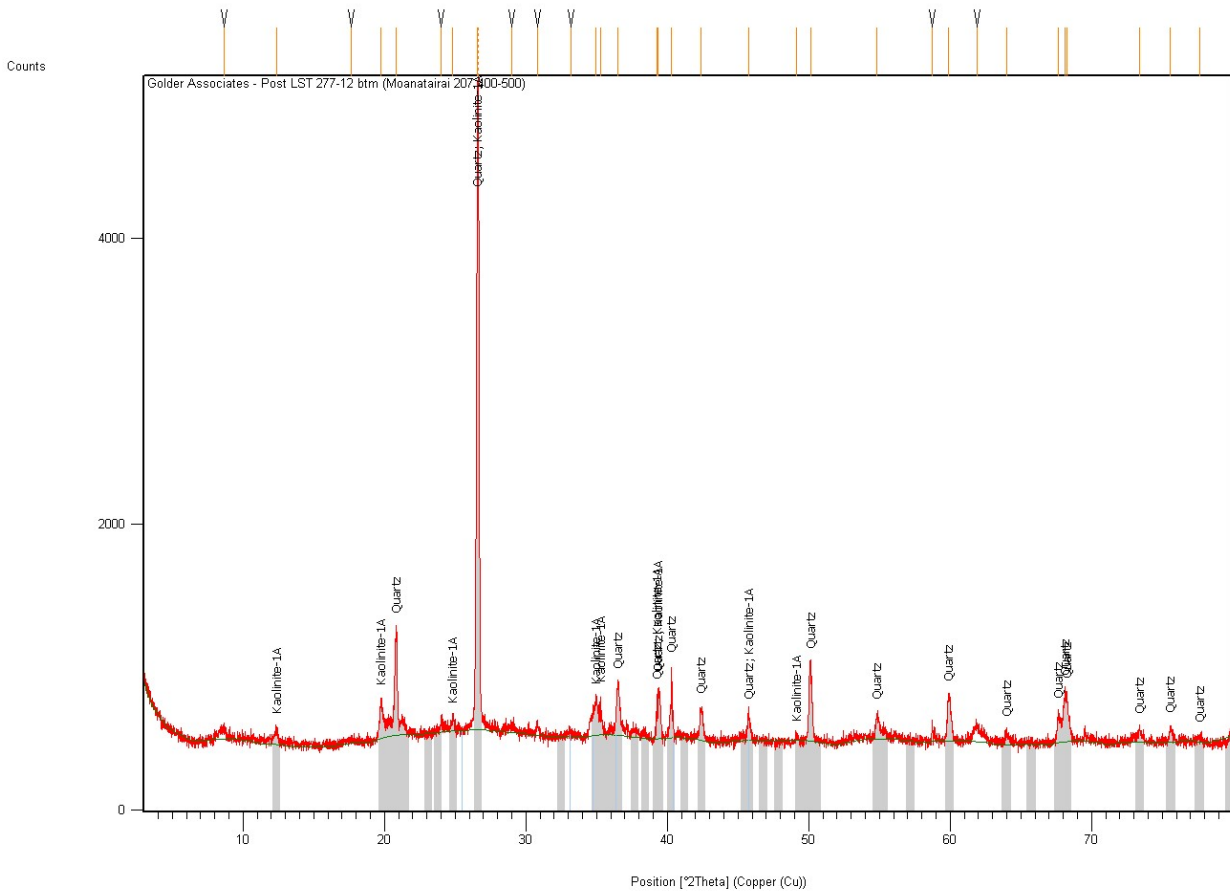


Figure H9: Golder – Post LST 277-12 btm (Moanatairai 207 400-500).

At Golder Associates we strive to be the most respected global company providing consulting, design, and construction services in earth, environment, and related areas of energy. Employee owned since our formation in 1960, our focus, unique culture and operating environment offer opportunities and the freedom to excel, which attracts the leading specialists in our fields. Golder professionals take the time to build an understanding of client needs and of the specific environments in which they operate. We continue to expand our technical capabilities and have experienced steady growth with employees who operate from offices located throughout Africa, Asia, Australasia, Europe, North America, and South America.

Africa + 27 11 254 4800
 Asia + 852 2562 3658
 Australia &
 New Zealand + 61 7 3721 5400
 Europe + 44 356 21 42 30 20
 North America + 1 800 275 3281
 South America + 55 21 3095 9500

solutions@golder.com
www.golder.com

AUCKLAND

Tel +64 9 486 8068
 Fax +64 9 486 8072

Level 2
 Nielsen Centre
 129 Hurstmere Road
 Takapuna
 Auckland 0622

PO Box 33-849
 Takapuna 0740

TAURANGA

Tel +64 7 928 5335
 Fax +64 7 928 5336

78 Maunganui Road
 Tauranga 3116

PO Box 13611
 Tauranga Central
 Tauranga 3141

HAMILTON

Tel +64 7 928 5335
 Fax +64 7 928 5336

Ruakura AgResearch Centre
 Room 31 in the Homestead
 East Street
 Hamilton 3214

PO Box 19-479
 Hamilton 3244

NELSON

Tel +64 3 548 1707
 Fax +64 3 548 1727

Level 3
 295 Trafalgar Street
 Nelson 7010

PO Box 1724
 Nelson 7040

CHRISTCHURCH

Tel +64 3 377 5696
 Fax +64 3 377 9944

Level 1
 132 Tuam Street
 Christchurch 8011

PO Box 2281
 Christchurch 8140

DUNEDIN

Tel +64 3 479 0390
 Fax +64 3 474 9642

Level 9A
 John Wickliffe House
 265 Princes Street
 Dunedin 9016

PO Box 1087
 Dunedin 9054

